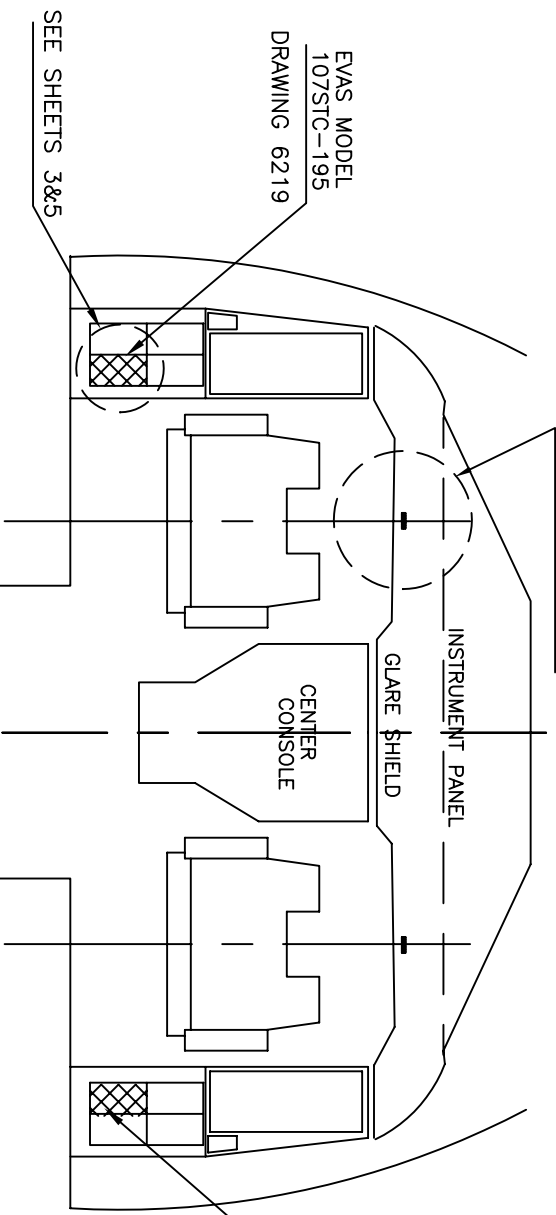


NOTES: UNLESS OTHERWISE SPECIFIED

2

SEE SHEET 4



CENTERLINE OF PILOT SEAT, CONTROL WHEEL AND FLIGHT INSTRUMENTS

EVAS MODEL 107STC-196
DRAWING 6219

REVISIONS			
REV.	DESCRIPTION	DATE	APPROVAL
A	ADDED ITEM 5 AND 6 TO PARTS LIST.	10/07/03	HEW
B	107STC-195 &-196 WAS 107-195 &-196; ADDED VISIONSAFE MDL IN 'USED ON'	04/20/04	CBKW

1

ITEM NO.	QTY	FSCM NO.	PART OR IDENTIFYING NO.	NOMENCLATURE OR DESCRIPTION	MATERIAL SPECIFICATION	NOTE
1	1	107STC-195	EVAS UNIT			
2	1	107STC-196	EVAS UNIT			
3	4	NAS1149DN816J	WASHER			
4	4	AN525-832R10	SCREW			
5	4	NAS43DD3-16FC	SPACER			
6	AR	DP100FR	ADHESIVE			

PARTS LIST

UNLESS OTHERWISE SPECIFIED DIMENSIONS ARE IN INCHES. TOLERANCES ARE: FRACTIONS DECIMALS ANGLES
± .0004 ± .0004 ±

CONTRACT NO.		VISION SAFE CORPORATION P.O.Box 5011, Kaneohe, HI 96744-5011 (USA)	
APPROVALS	DATE	EVAS 107STC-195 &-196 INSTALLATION: DORNIER	
DRAWN HEW	03/16/00	SIZE FSCM NO.	DRG NO. 6220
CHECKED		SCALE NONE	LOCATION 6220001B
ENG'G			SHEET 1 of 5
Q.A.			
DO NOT SCALE DRAWING			
FINISH	VISIONSAFE		
MDL 402	USED ON		
END			
APPLICATION			

THE INFORMATION CONTAINED HEREIN IS PROPRIETARY AND CONFIDENTIAL TO VISION SAFE CORP., AND SHALL NOT BE DISCLOSED OR COPIED, IN WHOLE OR IN PART WITHOUT THE WRITTEN CONSENT OF VISION SAFE CORP.

2

1

REV	B
SH	2

DWG NO.	6220
SIZE	B

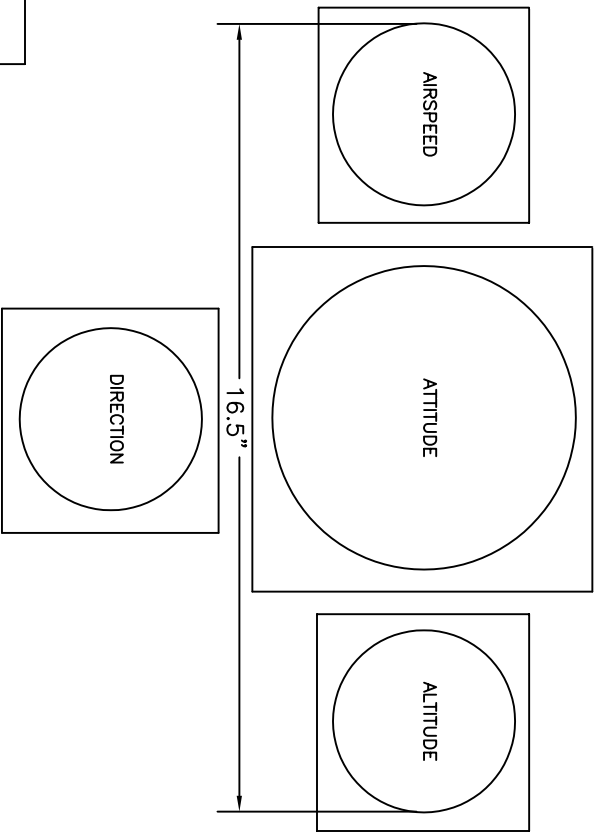
2

1

REVISIONS	
ZONE LTR	DESCRIPTION
	SEE SHEET 1

INSTALLATION OF EVAS 107STC-195 & -196

NOTE: BEFORE INSTALLING EVAS, MEASURE THE HORIZONTAL WIDTH OF THE INSTRUMENT CLUSTER TO BE COVERED BY EVAS (SEE SKETCH BELOW). THIS INSTRUMENT CLUSTER WIDTH MUST NOT EXCEED THE VALUE SHOWN FOR THIS INSTALLATION. IF THE WIDTH EXCEEDS THE VALUE SHOWN, CONTACT VISION SAFE CORP. FOR AN APPROPRIATE INFLATABLE VISION UNIT.



A

B

A

B

THE INFORMATION CONTAINED HEREIN IS PROPRIETARY AND CONFIDENTIAL TO VISION SAFE CORP., AND SHALL NOT BE DISCLOSED OR COPIED, IN WHOLE OR IN PART WITHOUT THE WRITTEN CONSENT OF VISION SAFE CORP.

SIZE	FSCM NO.	DWG NO.	6220	REV.	B
B					
SCALE	LOCATION	6220002B	SHEET	2 of 5	

2

1

2

INSTALLATION OF EVAS 107STC-195 & -196

EVAS UNIT INSTALLATION INSTRUCTIONS:

1. THE EVAS BOX IS TO BE MOUNTED INSIDE THE COCKPIT MANUAL STORAGE USING FOUR (4) AN525-832R10 #8 SCREWS AND NAS1149DN816J WASHERS SECURING THE EVAS BOX THRU THE EXISTING DIVIDER. SEE SHT 5 FOR LOCATION.
2. REMOVE MANUALS AND OTHER ITEMS THAT ARE CURRENTLY PLACED INSIDE THE STORAGE LOCATION WHICH THE EVAS BOX IS TO BE LOCATED.
3. MATCH DRILL FOUR (4) .302Ø-.322Ø HOLES ON THE EXISTING DIVIDER USING THE EVAS BACKPLATE AS A TEMPLATE.
4. BOND FOUR (4) NAS43DD3-16FC SPACERS INTO THE HOLES USING DP100FR ADHESIVE PER MANUFACTURER INSTRUCTIONS. ALLOW MINIMUM FOUR (4) HOURS FOR CURING TIME.
5. INSTALL EVAS BOX INTO THE COCKPIT MANUAL STORAGE UNIT.
6. THE PILOT SIDE INSTALLATION IS SHOWN ON THE DRAWING. THE COPILOT SIDE IS MIRROR IMAGE.

1

REVISIONS	
ZONE LTR	DESCRIPTION
	SEE SHEET 1

VELCRO

1. CLEAN THE GLARE SHIELD TOP SURFACE FROM THE AFT EDGE FORWARD 5", AND 3" TO EACH SIDE OF THE LONGITUDINAL CENTERLINE THROUGH THE CONTROL WHEEL.
2. CEMENT 1"x5" LOOP VELCRO TO THE GLARE SHIELD. LOCATE THE VELCRO AS SHOWN ON SHEET 4 OF 5. USE DEVCON TWO-TON EPOXY CEMENT.

DOCUMENTATION

- A. ADD THE FAA APPROVED AIRPLANE FLIGHT MANUAL SUPPLEMENT TO THE AFM.
- B. RECORD THE INSTALLATION IN THE AIRCRAFT RECORDS AND RETURN THE AIRPLANE TO SERVICE WITH A FAA FORM 337, RECORDING INCORPORATION OF STC NO. ST00892LA

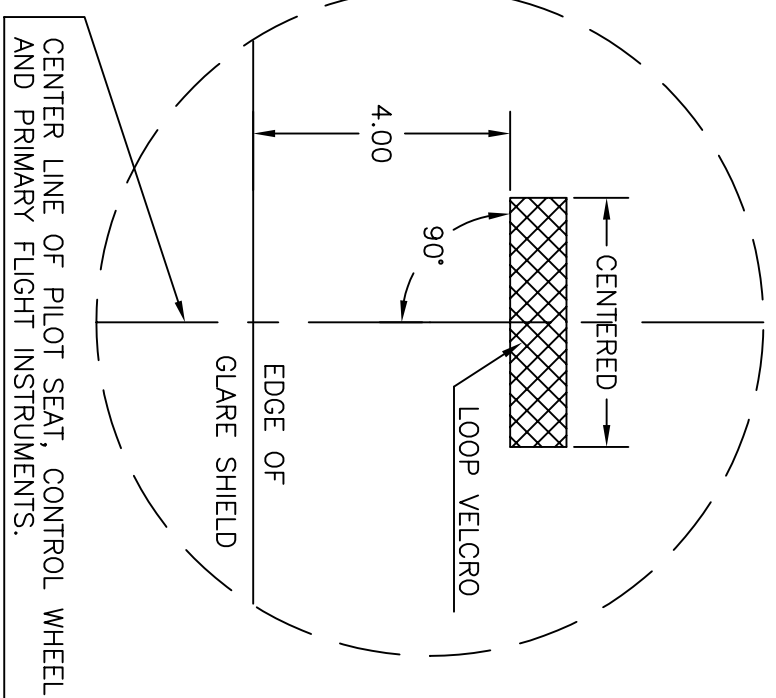
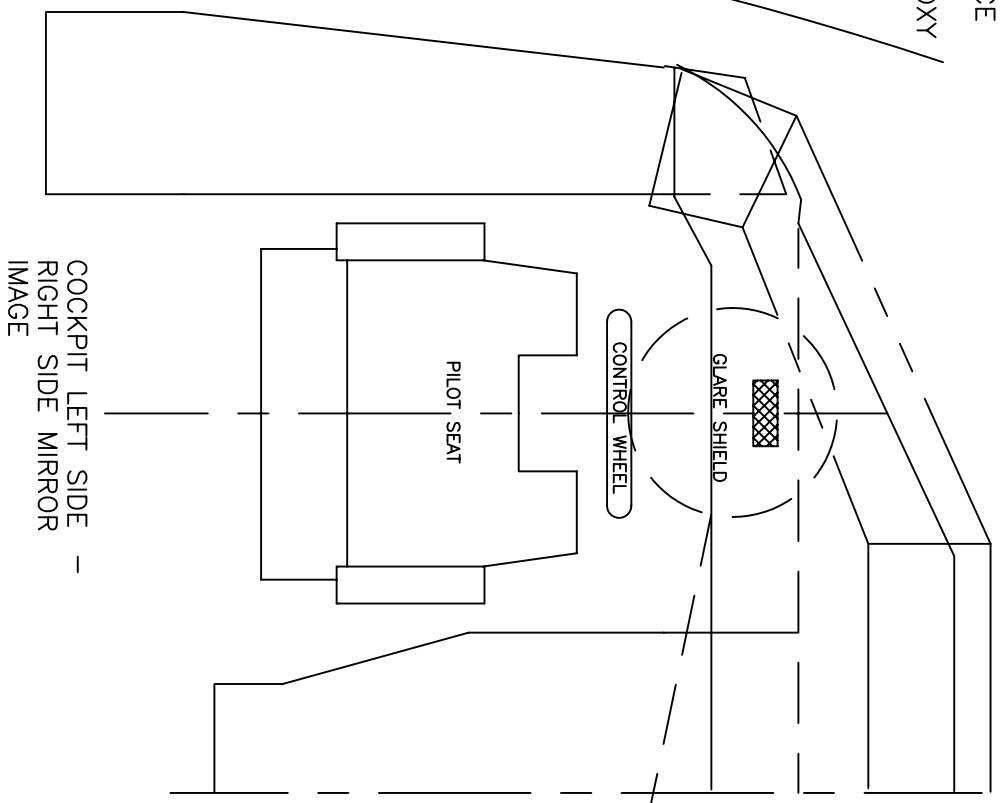
THE INFORMATION CONTAINED HEREIN IS PROPRIETARY AND CONFIDENTIAL TO VISION SAFE CORP. AND SHALL NOT BE DISCLOSED OR COPIED, IN WHOLE OR IN PART WITHOUT THE WRITTEN CONSENT OF VISION SAFE CORP.

SIZE	FSCM NO.	DRG. NO.	6220	REV.
B				B
SCALE	LOCATION	6220003B	SHEET	3 of 5

2

1

1. CLEAN SURFACE
2. USE DEVCON TWO TON EPOXY



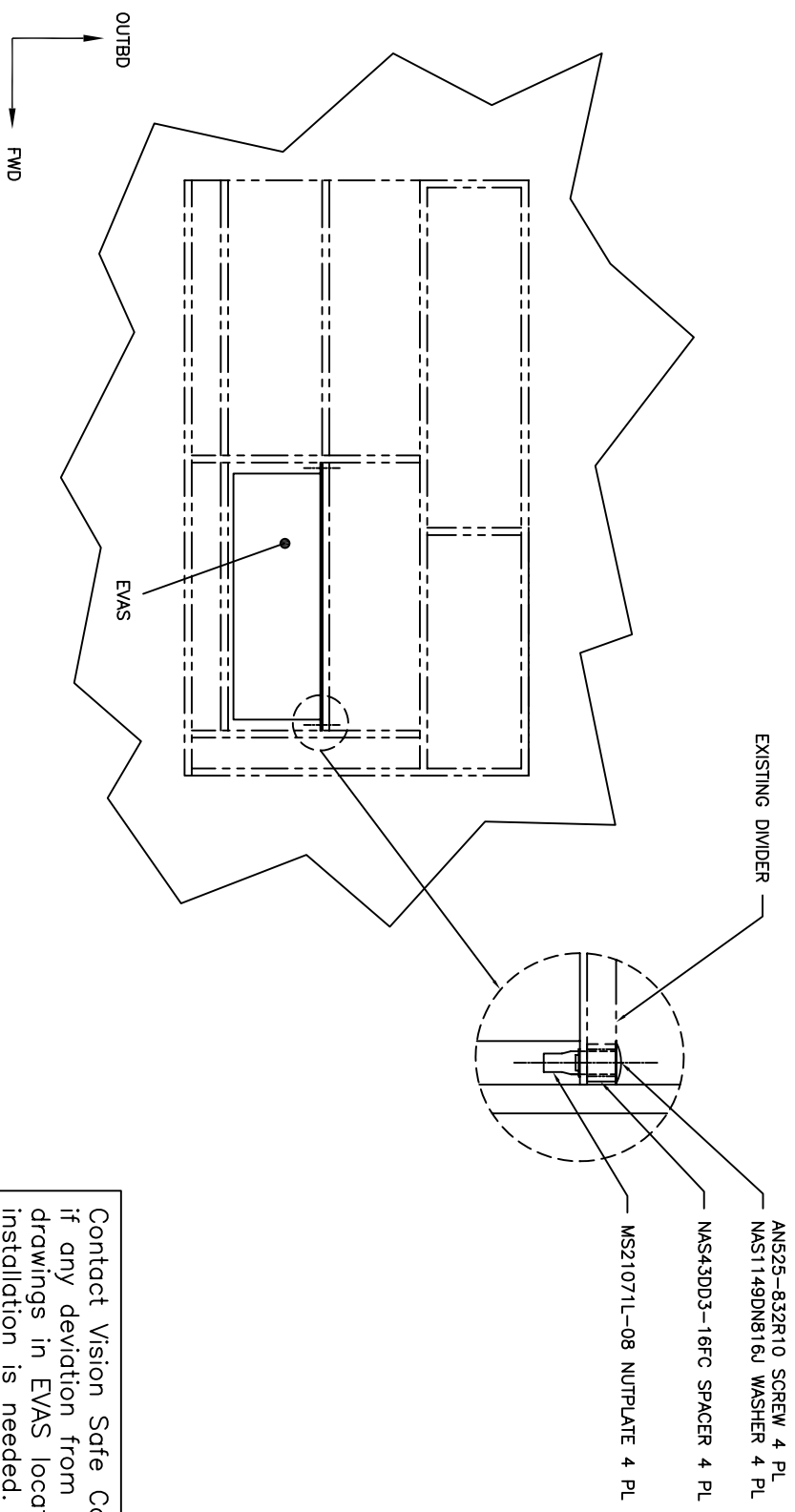
IVU VELCRO INSTALLATION

THE INFORMATION CONTAINED HEREIN IS PROPRIETARY AND CONFIDENTIAL TO VISION SAFE CORP., AND SHALL NOT BE DISCLOSED OR COPIED, IN WHOLE OR IN PART WITHOUT THE WRITTEN CONSENT OF VISION SAFE CORP.

REVISIONS	
ZONE	DESCRIPTION
LTR	SEE SHEET 1

2 1

REVISIONS	
ZONE	DESCRIPTION
LTR	SEE SHEET 1



VIEW LOOKING DOWN AT
LH COCKPIT MANUAL STORAGE

EXISTING DIVIDER

- AN525-832R10 SCREW 4 PL
- NAS1149DN816J WASHER 4 PL
- NAS43DD3-16FC SPACER 4 PL
- MS21071L-08 NUTPLATE 4 PL

Contact Vision Safe Corporation if any deviation from the approved drawings in EVAS location or installation is needed.

THE INFORMATION CONTAINED HEREIN IS PROPRIETARY AND CONFIDENTIAL TO VISION SAFE CORP., AND SHALL NOT BE DISCLOSED OR COPIED, IN WHOLE OR IN PART WITHOUT THE WRITTEN CONSENT OF VISION SAFE CORP.

2 1