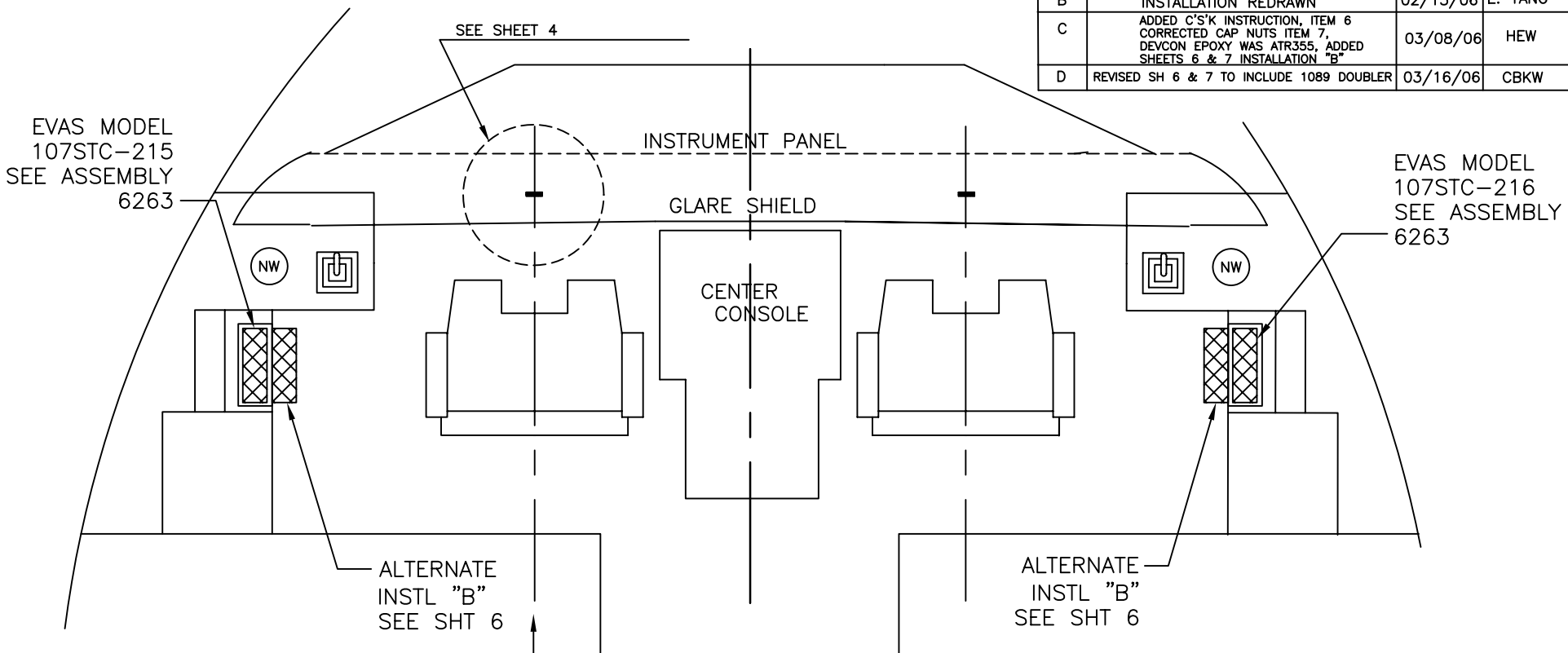


2

1

REVISIONS			
REV.	DESCRIPTION	DATE	APPROVAL
A	INSTALLATION REDRAWN	07/27/04	HEW
B	INSTALLATION REDRAWN	02/13/06	E. YANG
C	ADDED C'S'K INSTRUCTION, ITEM 6 CORRECTED CAP NUTS ITEM 7, DEVCON EPOXY WAS ATR355, ADDED SHEETS 6 & 7 INSTALLATION "B"	03/08/06	HEW
D	REVISED SH 6 & 7 TO INCLUDE 1089 DOUBLER	03/16/06	CBKW



EVAS MODEL
107STC-215
SEE ASSEMBLY
6263

EVAS MODEL
107STC-216
SEE ASSEMBLY
6263

ALTERNATE
INSTL "B"
SEE SHT 6

ALTERNATE
INSTL "B"
SEE SHT 6

CENTER LINE OF PILOT SEAT
AND FLIGHT INSTRUMENTS

Contact Vision Safe Corporation
if any deviation from the approved
drawings in EVAS location or
installation is needed.

ITEM NO.	QTY REQ'D	FSCM NO.	PART OR IDENTIFYING NO.	NOMENCLATURE OR DESCRIPTION	MATERIAL SPECIFICATION	NOTE
PARTS LIST						
UNLESS OTHERWISE SPECIFIED DIMENSIONS ARE IN INCHES, TOLERANCES ARE: FRACTIONS DECIMALS ANGLES * .XX± ± .XXX±				CONTRACT NO.		VISION SAFE CORPORATION P.O.Box 5011,Kaneohe,HI 96744-5011 (USA)
MATERIAL			APPROVALS	DATE	EVAS 107STC-215 & -216 INSTALLATION: VARIOUS AIRBUS	
FINISH			DRAWN HEW	07/30/03	SIZE FSCM NO.	DRG.NO. 6264 REV. D
APPLICATION			ENGRG		B	
DO NOT SCALE DRAWING			Q.A.		SCALE NONE	LOCATION 6264001D SHEET 1 of 7

2

1

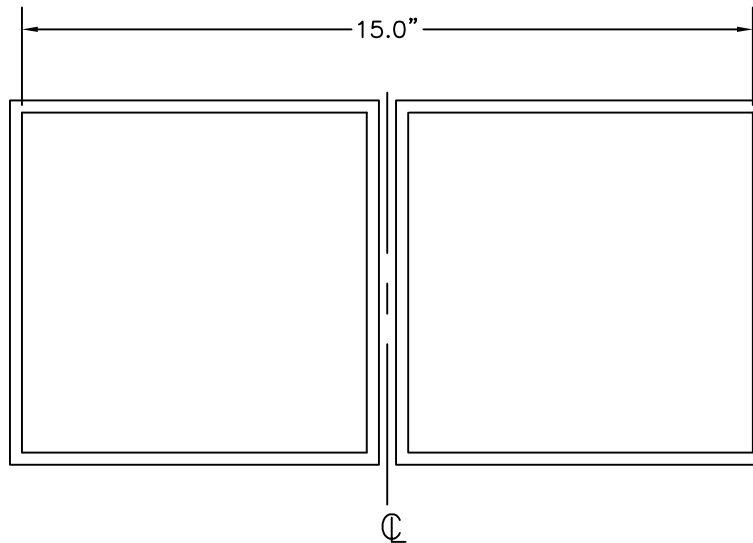
2

1

INSTALLATION OF EVAS 107STC-215 & -216

NOTE: BEFORE INSTALLING EVAS, MEASURE THE HORIZONTAL WIDTH OF THE INSTRUMENT CLUSTER TO BE COVERED BY EVAS (SEE SKETCH BELOW).

THIS INSTRUMENT CLUSTER MUST NOT EXCEED THE DIMENSION SHOWN IF THE WIDTH DOES EXCEED THE DIMENSION SHOWN, CONTACT VISION SAFE CORP. FOR AN APPROPRIATE INFLATABLE VISION UNIT.



B

A

2

1

REV	D
SH	2
SIZE	B
DRG NO.	6264

SIZE	FSCM NO.	DRG.NO.	REV.
B		6264	D
SCALE	LOCATION	6264002D	SHEET 2 of 7

2

1

INSTALLATION OF EVAS 107STC-215 & -216

EVAS UNIT

1. REMOVE THE LH STORAGE COMPARTMENTS FROM THE INBD SIDE OF LH SIDE CONSOLE PER MANUFACTURER'S MAINTENANCE MANUAL.
2. REMOVE CENTER DIVIDER FROM THE STORAGE COMPARTMENT REMOVED IN STEP 1.
3. REMOVE AND RETAIN THE TOP TWO SCREWS FROM THE LIP OF BACK PLATE ASSY OF THE EVAS TO RELEASE THE MOUNTING PLATE ASSY FROM THE UNIT.
4. TEMPORARILY LOCATE AND CENTER THE DOUBLER ONTO THE INBD SURFACE OF THE REMOVED STORAGE COMPARTMENT AS SHOWN ON SHT 5. TRIM DOUBLER AS NEEDED.
5. BOND DOUBLER TO THE INBD SURFACE OF THE STORAGE COMPARTMENT PANEL USING DEVCON EPOXY ADHESIVE. CURE PER MANUFACTURER'S INSTRUCTIONS.
6. TEMPORARILY LOCATE THE MOUNTING PLATE ASSY INSIDE THE STORAGE COMPARTMENT AS SHOWN ON SHT 5 AND DRILL FOUR (4) .142 DIA HOLES THRU USING DOUBLER AS A TEMPLATE. COUNTERSINK THE FOUR (4) HOLES ON THE OUTBD SIDE OF THE MOUNTING PLATE ASSY.
NOTE: THE TOP EDGE OF THE MOUNTING PLATE ASSY MUST BE FLUSH WITH THE INBD TOP EDGE OF THE STORAGE COMPARTMENT.
7. SECURE THE MOUNTING PLATE ASSY USING FOUR (4) MS24693-S26 SCREWS AND #6-32 CAP NUTS.
8. SLIDE THE EVAS UNIT INTO THE MOUNTING PLATE ASSY AND INSTALL THE TWO SCREWS REMOVED FROM STEP 3 TO SECURE THE UNIT.
9. REPEAT STEPS 1 THRU 8 FOR RH EVAS INSTALLATION.

VELCRO

1. CLEAN THE GLARE SHIELD TOP SURFACE FROM THE AFT EDGE FORWARD 5", AND 3" TO EACH SIDE OF THE LONGITUDINAL CENTERLINE THROUGH THE CONTROL WHEEL.
2. CEMENT 1"x5" LOOP VELCRO TO THE GLARE SHIELD. LOCATE THE VELCRO AS SHOWN ON SHEET 4 of 5. USE DEVCON TWO-TON EPOXY CEMENT.

DOCUMENTATION

1. ADD THE FAA APPROVED AIRPLANE FLIGHT MANUAL SUPPLEMENT TO THE AFM.
2. RECORD THE INSTALLATION IN THE AIRCRAFT RECORDS AND RETURN THE AIRPLANE TO SERVICE WITH A FAA FORM 337, RECORDING INCORPORATION OF STC NO. ST00892LA.

7	8	6CNC A3	CAP NUT, #6-32	
6	8	MS24693-S26	SCREW, FH, #6-32 X .375	
5	2	1086	MOUNTING PLATE ASSY	
4	AR	DEVCON EPOXY	ADHESIVE	
3	2	1088	DOUBLER	5052H32 OR EQUIV., ANODIZE, MATTE BLACK
2	1	107STC-216	EVAS - RH	
1	1	107STC-215	EVAS - LH	
ITEM NO.	QTY REQ'D	PART OR IDENTIFYING NO.	NOMENCLATURE OR DESCRIPTION	MATERIAL SPECIFICATION

PARTS LIST

SIZE	FSCM NO.	DRG.NO.	REV.
B		6264	D
SCALE	LOCATION	SHEET 3 of 7	
	6264003D		

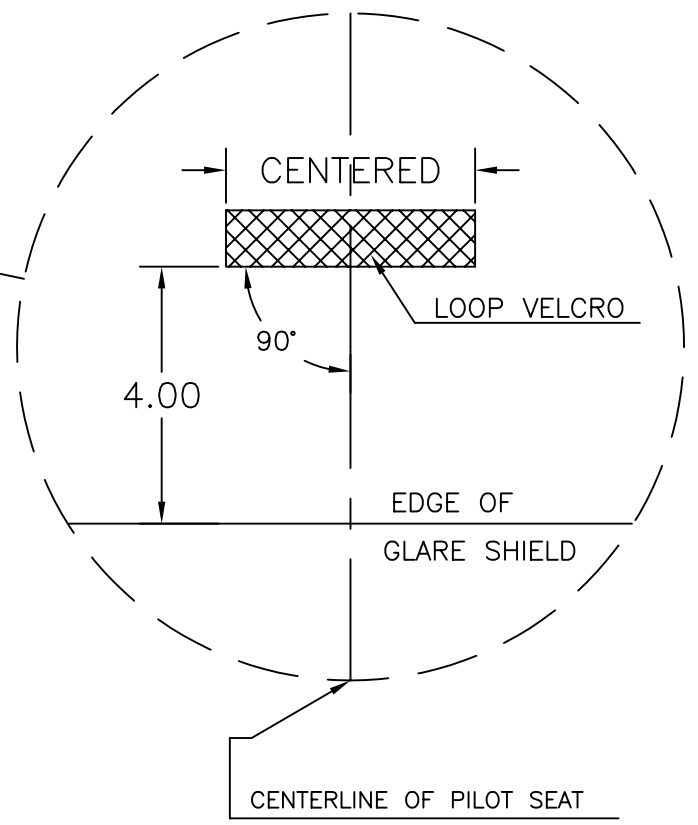
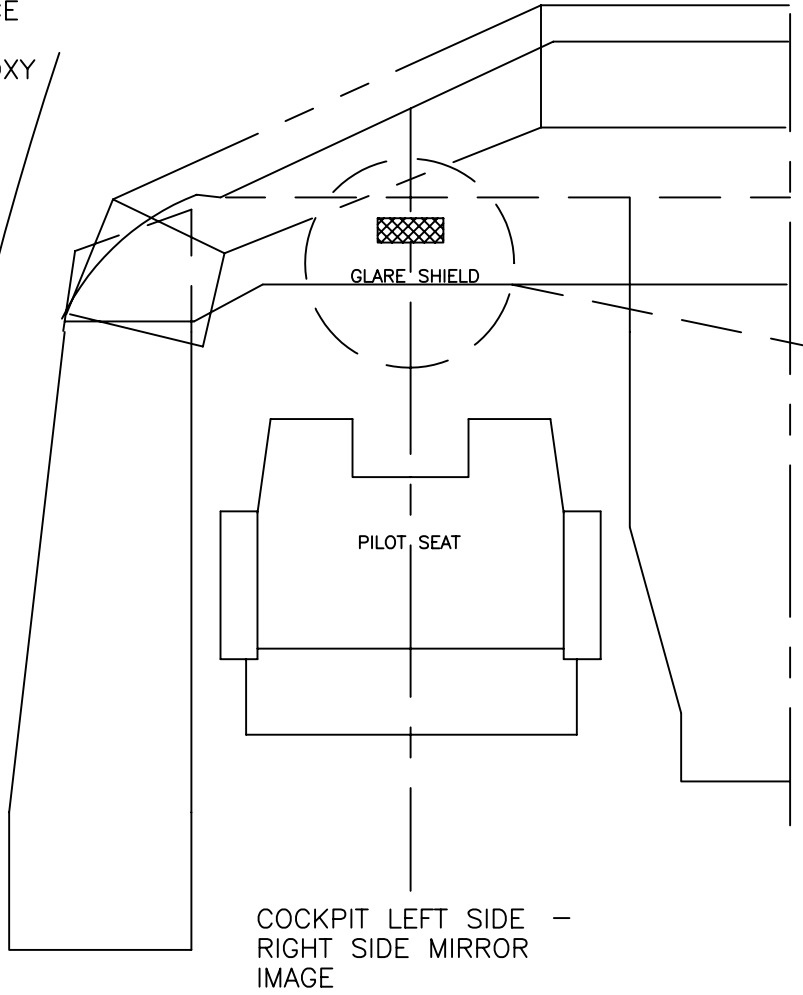
THE INFORMATION CONTAINED HEREIN IS PROPRIETARY AND CONFIDENTIAL TO VISION SAFE CORP., AND SHALL NOT BE DISCLOSED OR COPIED, IN WHOLE OR IN PART WITHOUT THE WRITTEN CONSENT OF VISION SAFE CORP.

2

1

REV. **D**
SH. **4**
DWG. NO. **6264**
SIZE **B**

- 1. CLEAN SURFACE
- 2. USE DEVCON TWO TON EPOXY



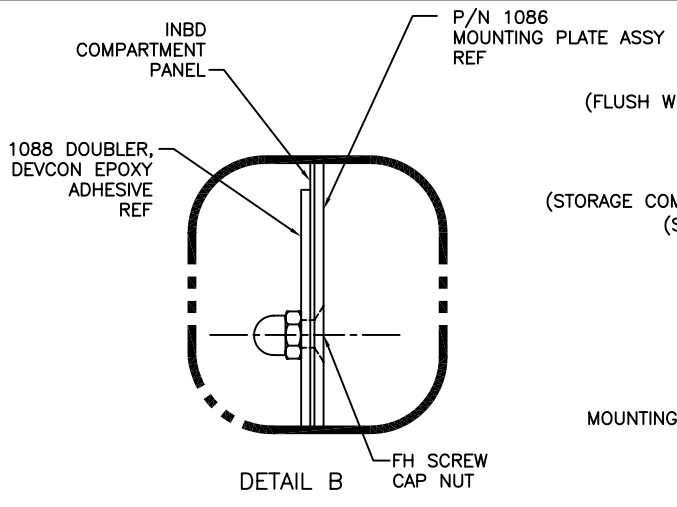
THE INFORMATION CONTAINED HEREIN IS PROPRIETARY AND CONFIDENTIAL TO VISION SAFE CORP., AND SHALL NOT BE DISCLOSED OR COPIED, IN WHOLE OR IN PART WITHOUT THE WRITTEN CONSENT OF VISION SAFE CORP.

SIZE B	FSCM NO.	DWG NO. 6264	REV D
SCALE N/A	LOCATION: 6264004D		SHEET 4 of 7

REV. 5 D
 SH 5
 SIZE B
 DWG NO. 6264

2

1



(FLUSH WITH TOP EDGE)
 (STORAGE COMPARTMENT)
 (SEE SHT 1)

P/N 1086
 MOUNTING PLATE ASSY

CL
 STORAGE
 COMPARTMENT

1088 DOUBLER
 REF

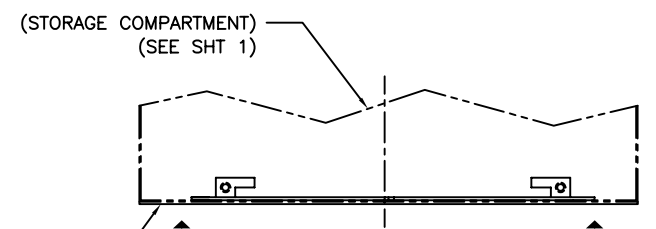
APPLY SCREW, REMOVED IN
 STEP 3 ON SHEET 3,
 THRU THE LIP OF EVAS UNIT
 AFTER UNIT IS INSTALLED.
 2 PLS

SEE DETAIL B

FH SCREW
 MS24693-C26, 4 EA
 CAP NUT
 6CNCA3, 4 EA

CSK 100' X .268 ON
 P/N 1086 MOUNTING
 PLATE ASSY
 4 PLS

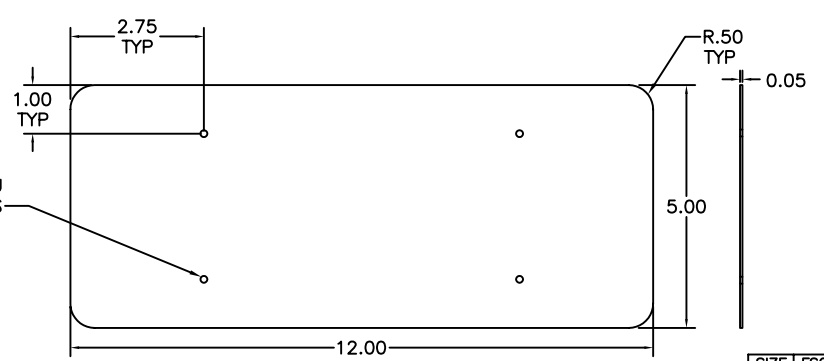
DETAIL B
 FH SCREW
 CAP NUT



VIEW LOOKING DOWN AT
 LH COCKPIT LEFT CONSOLE
 MIRROR INSTALLATION ON RH SIDE

OUTBD
 AFT

VIEW A-A
 VIEW LOOKING OUTBD



DOUBLER
 P/N 1088

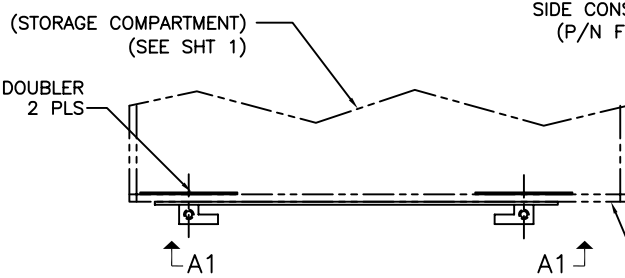
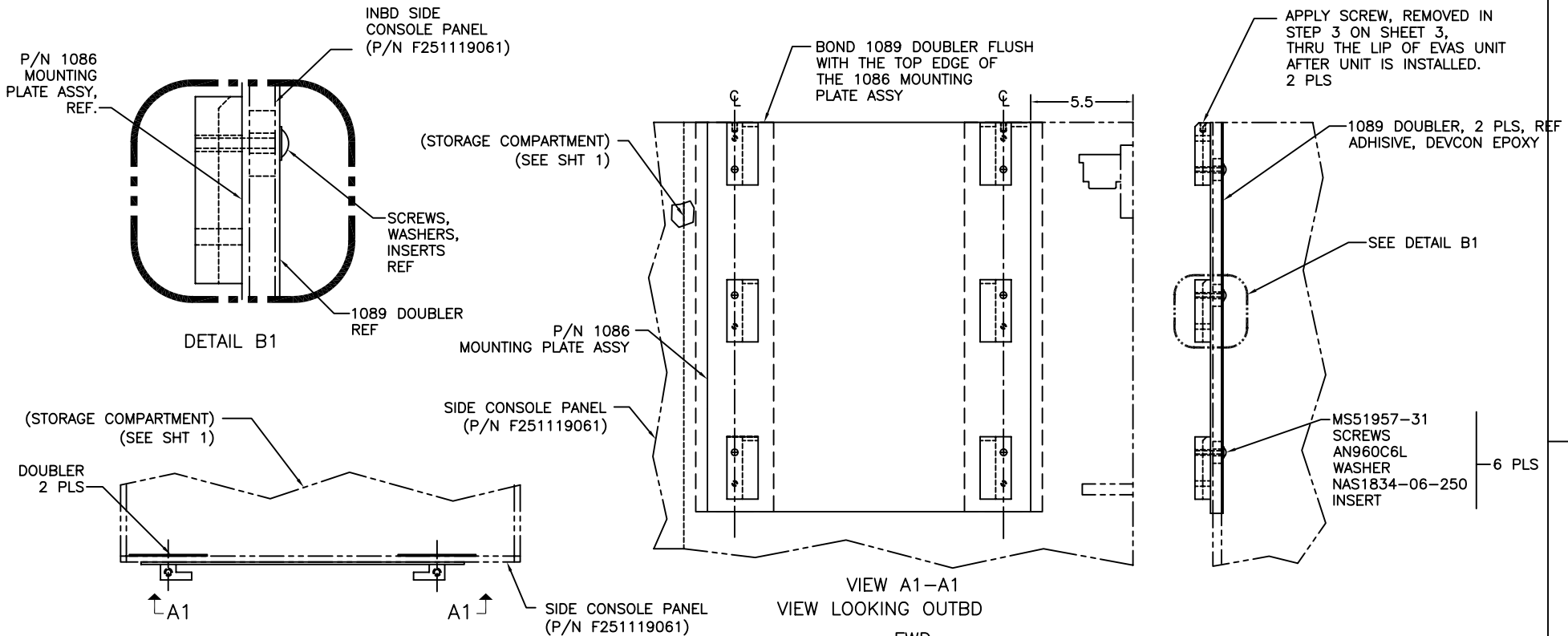
THE INFORMATION CONTAINED HEREIN IS PROPRIETARY
 AND CONFIDENTIAL TO VISION SAFE CORP., AND SHALL
 NOT BE DISCLOSED OR COPIED, IN WHOLE OR IN PART
 WITHOUT THE WRITTEN CONSENT OF VISION SAFE CORP.

SIZE B	FSCM NO.	DRG.NO. 6264	REV. D
SCALE : NONE		LOCATION 6264005D	SHEET 5 of 7

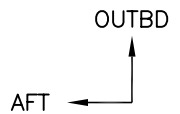
2

1

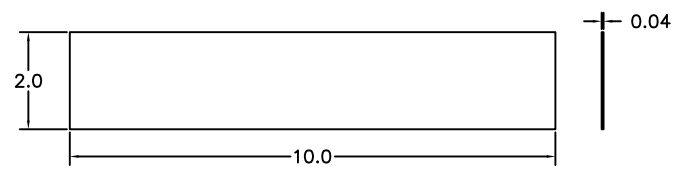
INSTALLATION "B" ALONGSIDE COMPARTMENT.



VIEW LOOKING DOWN AT
LH COCKPIT SIDE CONSOLE
MIRROR INSTALLATION ON RH SIDE



- NOTES:
1. EVAS MAY BE MOUNTED FLUSH WITH THE COMPARTMENT TOP OR LOWER, AS DESIRED.



1089 DOUBLER

THE INFORMATION CONTAINED HEREIN IS PROPRIETARY AND CONFIDENTIAL TO VISION SAFE CORP., AND SHALL NOT BE DISCLOSED OR COPIED, IN WHOLE OR IN PART WITHOUT THE WRITTEN CONSENT OF VISION SAFE CORP.

SIZE B	FSCM NO.	DRG. NO. 6264	REV. D
SCALE : NONE		LOCATION 6264006D	SHEET 6 of 7

INSTALLATION OF EVAS 107STC-215 & -216 INSTALLATION "B," ALONGSIDE COMPARTMENT.

EVAS UNIT

NOTE:

THIS INSTALLATION "B" IS AN ALTERNATE TO THE ORIGINAL STORAGE COMPARTMENT INSTALLATION.

1. REMOVE THE LH STORAGE COMPARTMENTS FROM THE LH SIDE CONSOLE PER MANUFACTURER'S MAINTENANCE MANUAL.
2. REMOVE AND RETAIN THE TOP TWO SCREWS FROM THE LIP OF BACK PLATE ASSY OF THE EVAS TO RELEASE THE MOUNTING PLATE ASSY FROM THE UNIT.
3. TEMPORARILY LOCATE THE P/N 1086 MOUNTING PLATE ASSY ON THE SIDE CONSOLE PANEL AS SHOWN ON SHT 6.
4. USING THE P/N 1086 MOUNTING PLATE ASSY AS A PATTERN, MARK AND DRILL SIX HOLES (#19, 0.166) THRU THE SIDE CONSOLE PANEL AS SHOWN ON SHT 6.
5. BOND TWO (2) 1089 DOUBLERS ON THE OUTBD SIDE OF THE SIDE CONSOLE PANEL WITH CENTER OF THE DOUBLER ALIGNED WITH THE CENTER OF THE HOLES DRILLED IN STEP 4. CURE PER MANUFACTURER'S INSTRUCTION.
6. MATCH DRILL HOLES THRU THE BONDED DOUBLERS.
7. INSTALL INSERTS AT THE HOLE POSITIONS ON THE SIDE CONSOLE PANEL PER VISIONSAFE REPORT NO. 30.
8. INSTALL MOUNTING PLATE ASSY USING SIX (6) PAN HEAD SCREWS AND WASHERS THRU THE SIDE CONSOLE PANEL INTO MOUNTING RAILS AS SHOWN ON SHT 6.
9. INSTALL EVAS ONTO MOUNTING RAILS AND FASTEN WITH TWO SCREWS FROM STEP 2.

VELCRO

1. CLEAN THE GLARE SHIELD TOP SURFACE FROM THE AFT EDGE FORWARD 5", AND 3" TO EACH SIDE OF THE LONGITUDINAL CENTERLINE THROUGH THE CONTROL WHEEL.
2. CEMENT 1"x5" LOOP VELCRO TO THE GLARE SHIELD. LOCATE THE VELCRO AS SHOWN ON SHEET 4 of 5. USE DEVCON TWO-TON EPOXY CEMENT.

DOCUMENTATION

1. ADD THE FAA APPROVED AIRPLANE FLIGHT MANUAL SUPPLEMENT TO THE AFM.
2. RECORD THE INSTALLATION IN THE AIRCRAFT RECORDS AND RETURN THE AIRPLANE TO SERVICE WITH A FAA FORM 337, RECORDING INCORPORATION OF STC NO. ST00892LA.

ITEM NO.	QTY REQ'D	PART OR IDENTIFYING NO.	NOMENCLATURE OR DESCRIPTION	MATERIAL SPECIFICATION
8	AR	DEVCON EPOXY	ADHESIVE	
7	4	1089	DOUBLER	5052H32 OR EQUIV., ANODIZE, MATTE BLACK, 2.0X10.0X.04
6	12	NAS1834-06-250	INSERT	
5	12	AN960C6L	WASHER	
4	12	MS51957-31	SCREW, PAN HEAD	6-32X.625
3	2	1086	MOUNTING PLATE ASSY	
2	1	107STC-216	EVAS - RH	
1	1	107STC-215	EVAS - LH	

PARTS LIST

THE INFORMATION CONTAINED HEREIN IS PROPRIETARY AND CONFIDENTIAL TO VISION SAFE CORP., AND SHALL NOT BE DISCLOSED OR COPIED, IN WHOLE OR IN PART WITHOUT THE WRITTEN CONSENT OF VISION SAFE CORP.

SIZE B	FSCM NO.	DRG.NO. 6264	REV. D
SCALE	LOCATION 6264007D	SHEET 7 of 7	

REV D
SH 7
SIZE B
DWG NO. 6264

A

B

A