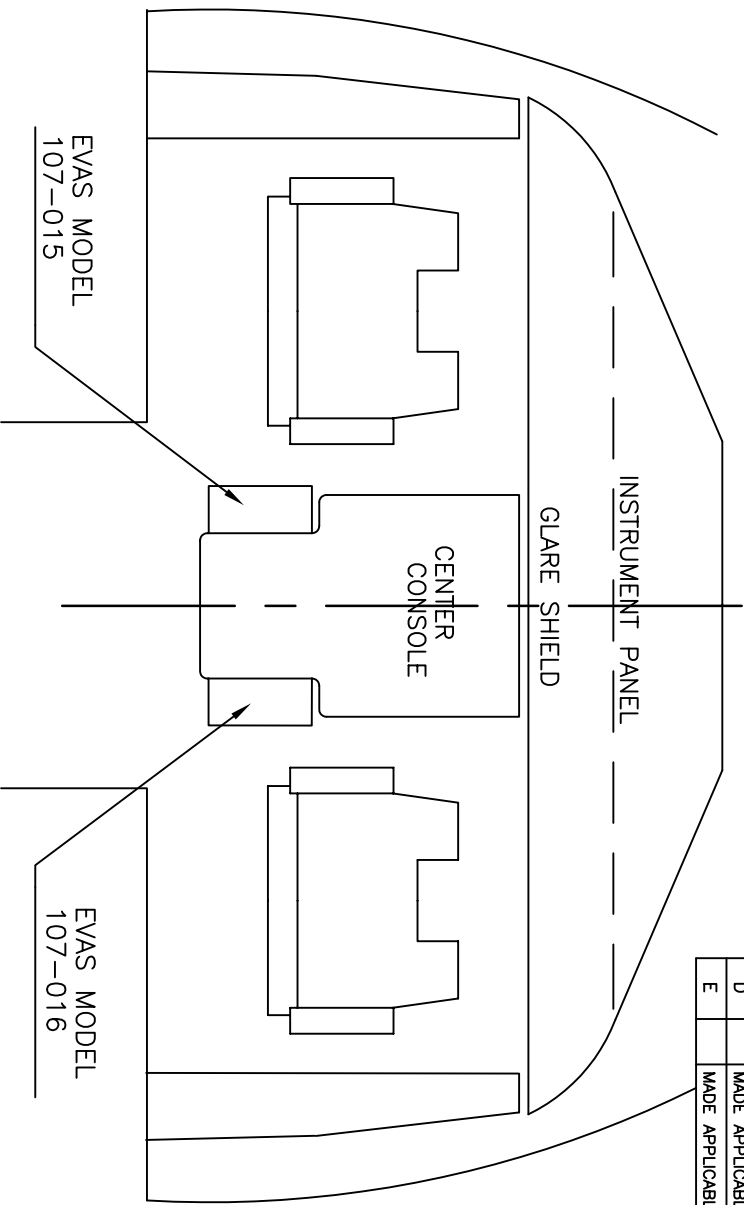


NOTES: UNLESS OTHERWISE SPECIFIED

2

1

REV.	DESCRIPTION	DATE	APPROVAL
A	ADDED 2 VELCRO, SHEET 4	04/29/02	HEW
B	ADDED EVAS PAD, SHEET 5	05/17/02	HEW
C	MS20426AD-X WAS MS20425AD3-X	09/26/02	HEW
D	MADE APPLICABLE TO A-319 & 321	02/18/03	HEW
E	MADE APPLICABLE TO A-318	01/13/04	HEW



ITEM NO.	QTY	FSCM NO.	PART OR IDENTIFYING NO.	NOMENCLATURE OR DESCRIPTION	MATERIAL SPECIFICATION	NOTE
UNLESS OTHERWISE SPECIFIED DIMENSIONS ARE IN INCHES. TOLERANCES ARE FRACTIONS DECIMALS ANGLES						
PARTS LIST						
CONTRACT NO.				VISION SAFE CORPORATION P.O. Box 5011 Kaneohe, HI 96744-5011 (USA)		
MATERIAL				APPROVALS	DATE	
FINISH				DRAWN	HEW	08/08/01
DD NOT SCALE DRAWING				CHECKED		
AIRBUS				ENG		
A-318, 319,						
320 & 321						
USED ON						
APPLICATION						

2

1

ITEM NO.	QTY	FSCM NO.	PART OR IDENTIFYING NO.	NOMENCLATURE OR DESCRIPTION	MATERIAL SPECIFICATION	NOTE
UNLESS OTHERWISE SPECIFIED DIMENSIONS ARE IN INCHES. TOLERANCES ARE FRACTIONS DECIMALS ANGLES						
PARTS LIST						
CONTRACT NO.				VISION SAFE CORPORATION P.O. Box 5011 Kaneohe, HI 96744-5011 (USA)		
MATERIAL				APPROVALS	DATE	
FINISH				DRAWN	HEW	08/08/01
DD NOT SCALE DRAWING				CHECKED		
AIRBUS				ENG		
A-318, 319,						
320 & 321						
USED ON						
APPLICATION						

A

B

A

B

SH	REV
2	E

SIZE	DWG NO.
B	6074

B

A

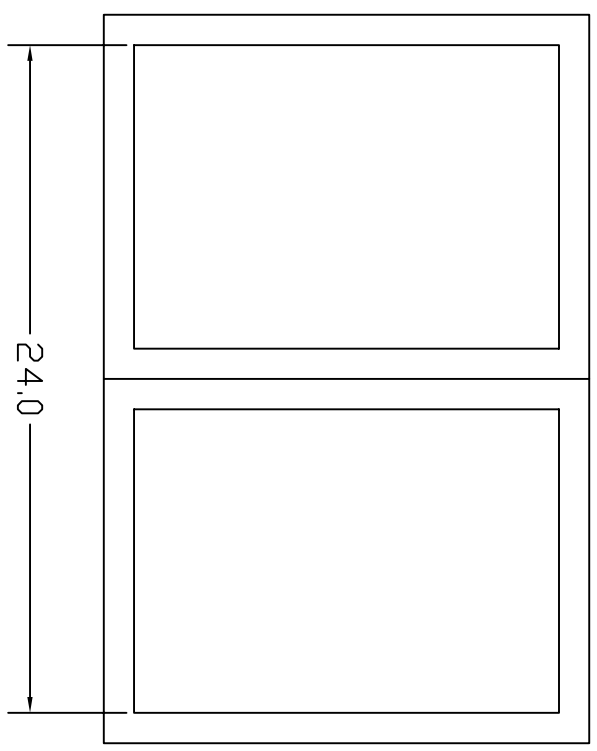
2

1

INSTALLATION OF EVAS IN AIRBUS A-318, A-319, A-320 & A-321

NOTE: BEFORE INSTALLING EVAS, MEASURE THE HORIZONTAL WIDTH OF THE INSTRUMENT CLUSTER TO BE COVERED BY EVAS (SEE SKETCH BELOW).

THIS INSTRUMENT CLUSTER WIDTH MUST NOT EXCEED THE MAXIMUM MEASUREMENT SHOWN. IF THE WIDTH DOES EXCEED THE MEASUREMENT SHOWN, CONTACT VISION SAFE CORP FOR AN APPROPRIATE INFLATABLE VISION UNIT.



2

1

SIZE	FSCM NO.	DRG NO.	REV.
B		6074	E
SCALE	LOCATION	SHEET 2 of 5	
	6074002E		

A

B

REV
E

SH
3

DWG NO.
6074

SIZE
B

B

A

2

1

INSTALLATION OF EVAS IN AIRBUS A-318, A-319, A-320 & A-321

FLIGHT MANUAL AND RETURN TO SERVICE

1. AIRPLANE FLIGHT MANUAL
INSERT THE FURNISHED AIRPLANE FLIGHT MANUAL SUPPLEMENT
INTO THE ORIGINAL AIRPLANE FLIGHT MANUAL.
2. AIRPLANE RETURN TO SERVICE
RETURN THE AIRPLANE TO SERVICE BY FAA FORM 337,
RECORDING INCORPORATION OF STC #ST00892LA.

A

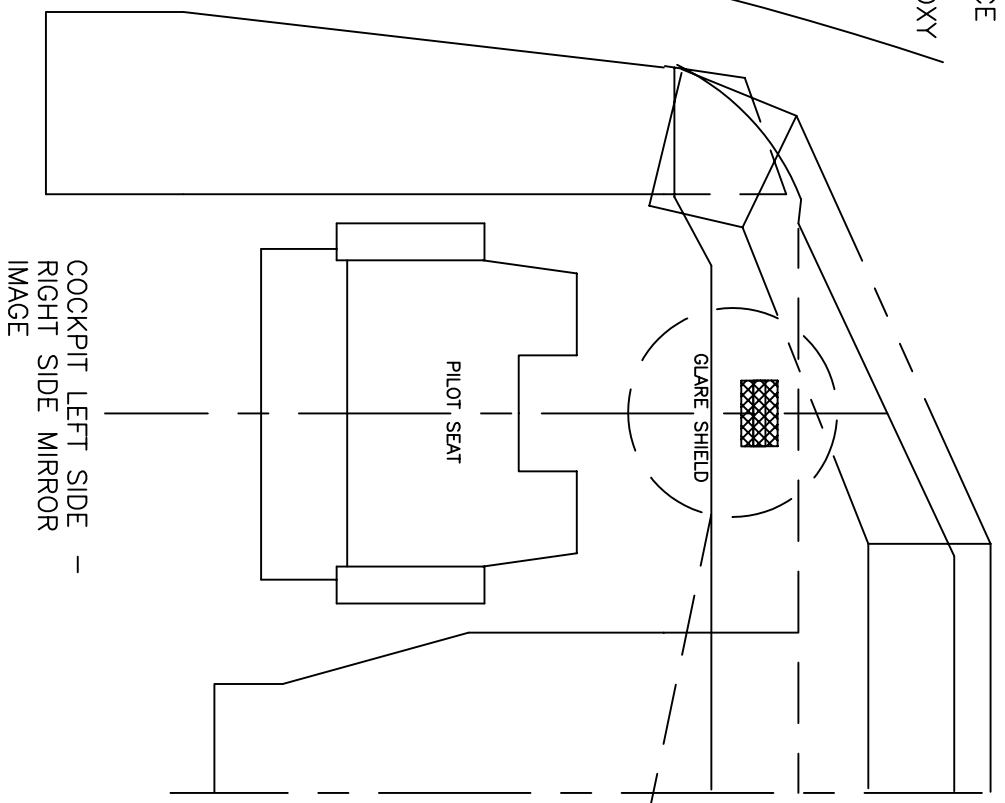
B

2

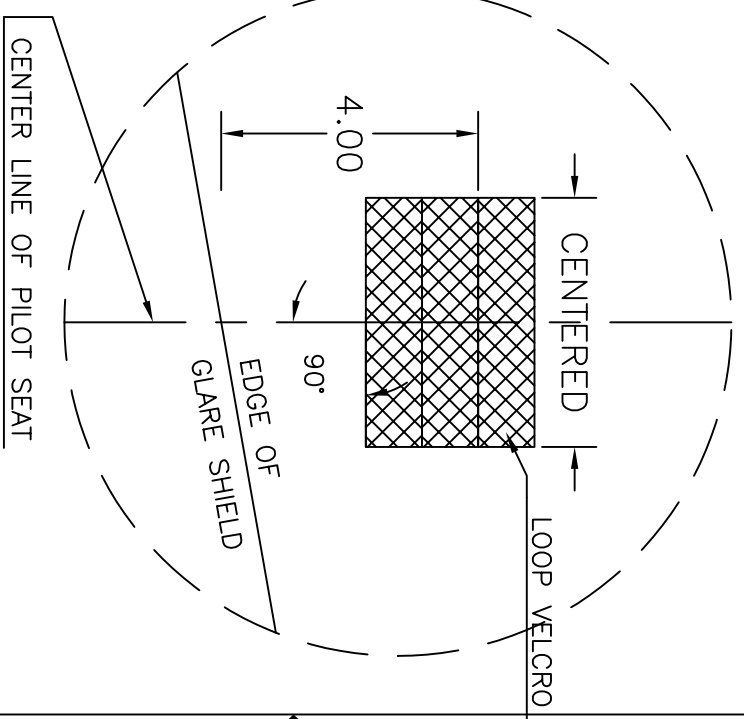
1

SIZE	FSCM NO.	DRG NO.	REV.
B		6074	E
SCALE	LOCATION	SHEET 3 of 5	
	6074003E		

1. CLEAN SURFACE
2. USE DEVCON TWO TON EPOXY



THE INFORMATION CONTAINED HEREIN IS PROPRIETARY AND CONFIDENTIAL TO VISION SAFE CORP., AND SHALL NOT BE DISCLOSED OR COPIED, IN WHOLE OR IN PART WITHOUT THE WRITTEN CONSENT OF VISION SAFE CORP.

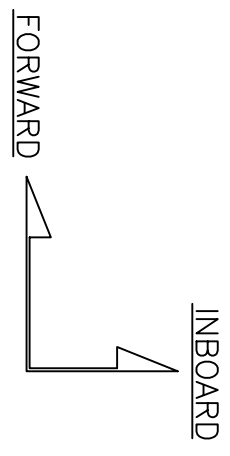


1. APPLY FORWARD VELCRO 4" FORWARD OF AFT GLARE SHIELD EDGE CENTERED ON FORE/AFT CENTER LINE OF PILOT SEAT, AND PERPENDICULAR TO THAT CENTERLINE.
2. APPLY 2 ADDITIONAL VELCRO STRIPS ADJACENT TO AND AFT OF THE FIRST STRIP.

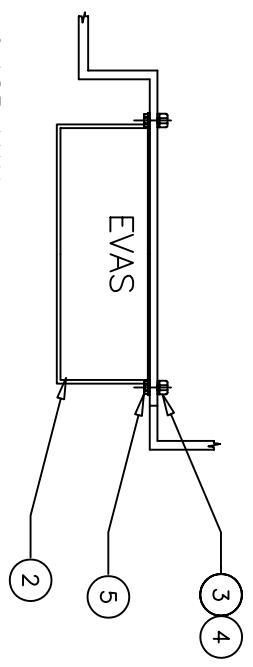
IVU VELCRO INSTALLATION

2

1

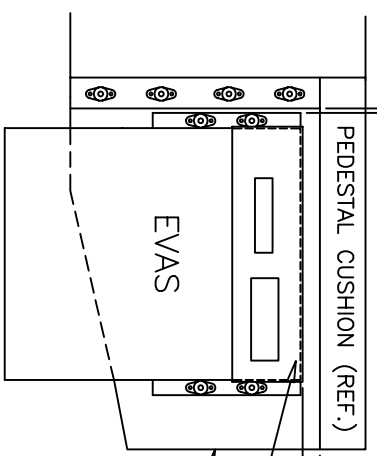


0.125 MAX.



PEDESTAL CUSHION (REF.)

0.75 MAX



CENTER CONSOLE OUTLINE

COCKPIT FLOOR LEVEL

EVAS INSTALLATION
INSTRUCTIONS (QTY. PER EVAS)

1. POSITION EVAS ON OUTBOARD SIDE OF CENTER CONSOLE, AS SHOWN.
2. MARK POSITION OF MOUNTING HOLES.
3. REMOVE CENTER CONSOLE SHELL.
4. DRILL CLEARANCE HOLES FOR MOUNTING SCREWS.
5. INSTALL ITEM 3 NUTPLATES (4 LOCATIONS).
6. INSTALL CENTER CONSOLE SHELL.
7. INSTALL EVAS USING ITEM 5, SCREW (4 PLACES).
8. EPOXY CEMENT LOOP VELCRO ON TOP ENDS OF CONTAINER AND NEAR TOP CENTER TO MATE WITH P/N 1059 EVAS PAD.

ITEM NO.	QTY LEFT	QTY RIGHT	PART OR IDENTIFYING NO.	DESCRIPTION	MATERIAL SPECIFICATION	NOTE
6	1	1	1059	EVAS PAD		
5	4	4	NAS1100-3-6	SCREW		
4	8	8	MS20426AD-X	RIVET		
3	4	4	NAS1474-C3	NUTPLATE		
2	X		107-015	EVAS		
1		X	107-016	EVAS		

PARTS LIST

THE INFORMATION CONTAINED HEREIN IS PROPRIETARY AND CONFIDENTIAL TO VISION SAFE CORP., AND SHALL NOT BE DISCLOSED OR COPIED, IN WHOLE OR IN PART WITHOUT THE WRITTEN CONSENT OF VISION SAFE CORP.

2

1

A

B

A

B