

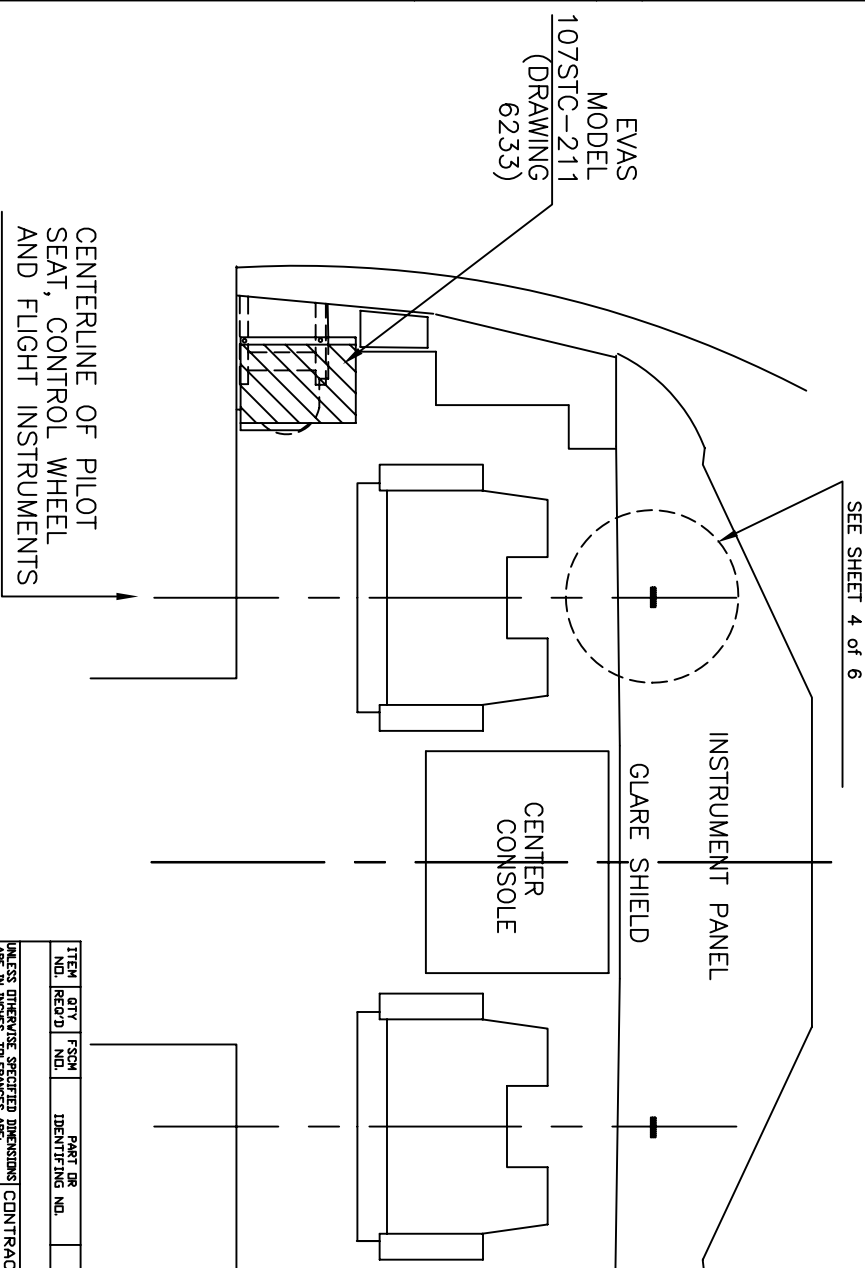
NOTES: UNLESS OTHERWISE SPECIFIED

2

1

REVISIONS

REV.	DESCRIPTION	DATE	APPROVAL
A	SHEET 4, 2" WAS 4"	05/22/03	HEW
B	SHEET 3, ADDED LOCK WASHERS	06/05/03	HEW
C	L & R INSTALLATIONS SEPARATED	09/18/03	HEW
D	REVISED LEFT INSTALLATION	01/23/04	HEW
E	SHEET 6, ADDED 5" DIM.	02/11/04	HEW
F	ADDED P/N 1082, BACK PLATE	11/13/04	HEW
G	UPDATE TITLE BLOCK & USED ON UPDATE RIGHT INSTALLATION #5 ON SHEET 3	12/09/04	CBKW
H	CHANGED INSTALLATION INSTRUCTIONS, SH. 3; CHANGED ITEM 6, #10 NUTS, TO NUTPLATES; ADDED VELCRO INSTRUCTIONS, SH. 4.	04/26/05	CBKW
I	CHANGED ITEM 5, SH. 3, #10 PLAIN WASHER TO #10 FENDER WASHER.	08/22/05	JLH



EVAS MODEL 107STC-212 (DRAWING 6233)

Contact Vision Safe Corporation if any deviation from the approved drawings in EVAS location or installation is needed.

ITEM NO.	QTY	FSCN	PART OR IDENTIFYING NO.	CONTRACT NO.	APPROVALS	DATE	SCALE	LOCATION	SHEET
UNLESS OTHERWISE SPECIFIED DIMENSIONS ARE IN INCHES. TOLERANCES ARE FRACTIONS DECIMALS ANGLES									
PARTS LIST									
VISION SAFE CORPORATION P.O. Box 5011 Kaneohe, HI 96744-5011 (USA)									
EVAS MODEL 107STC-211 & -212 INSTALLATION: ATR42 & 72 SERIES									
SCALE NONE									
SHEET 1 of 6									

VISIONSAFE	MDL 220	FINISH	DD NOT SCALE DRAWING
AEROSPATIALE	USED DN	ENG	Q.A.
END		APPROVALS	
NEXT ASSY		HEW	05/01/03
APPLICATION		CHECKED	
		ENG	

2

1

1

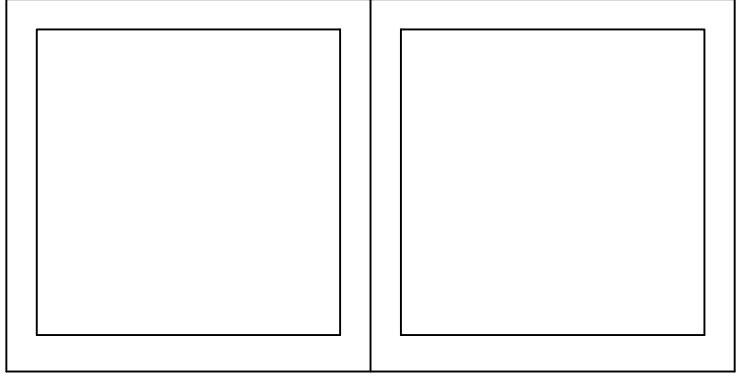
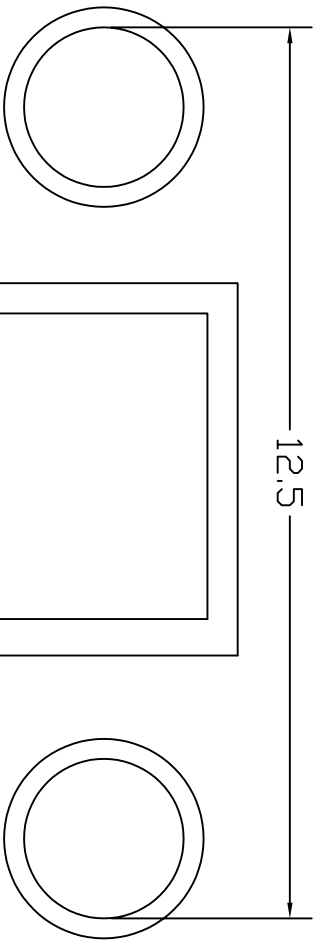
SH	REV
2	1

SIZE	DWG NO.
B	6232

INSTALLATION OF EVAS 107STC-211 & -212

NOTE: BEFORE INSTALLING EVAS, MEASURE THE HORIZONTAL WIDTH OF THE INSTRUMENT CLUSTER TO BE COVERED BY EVAS (SEE SKETCH BELOW). THIS INSTRUMENT CLUSTER WIDTH MUST NOT EXCEED THE MAXIMUM MEASUREMENT SHOWN. IF THE WIDTH DOES EXCEED THE MEASUREMENT SHOWN, CONTACT VISION SAFE CORP FOR AN APPROPRIATE INFLATABLE VISION UNIT.

12.5



SIZE	FSCM NO.	DRG NO.	REV.
B		6232	1
SCALE	LOCATION	SHEET 2 of 6	
	62320021		

A

B

A

B

2

1

2

1

EVAS INSTALLATION

LEFT SIDE INSTALLATION

NOTE: SEE SHEET 6 FOR THE LEFT INSTALLATION.
 1. EVAS 107STC-211 IS TO BE INSTALLED ON TOP OF THE OXYGEN INSTALLATION COVER AT THE LEFT REAR OF THE COCKPIT, WITH THE EVAS COVER FORWARD.
 2. PLACE EVAS ON THE OXYGEN COVER AND DRILL TWO 0.20 HOLES IN THE OUTBOARD MOUNTING FLANGE OF EVAS TO BE CENTERED IN THE FLANGE AND CENTERED IN THE UNDERLAYING LATERAL STRUCTURAL SUPPORT, ONE FORWARD AND ONE AFT. EVAS SHOULD CLEAR THE AFT BULKHEAD SLIGHTLY TO AVOID RUBBING, AND THE AFT OUTBOARD CORNER OF EVAS SHOULD BE

5" INBOARD OF THE COCKPIT SIDEWALL AT THE BULKHEAD.
 3. INSTALL #10 NUTPLATES, MS21048-3 OR EQUIVALENT AIRCRAFT QUALITY NUTPLATES, TO DRILLED HOLES.
 4. MOUNT EVAS USING (2) #10 SCREWS AND (2) # 10 WASHERS THROUGH THE OUTBOARD FLANGE AND COVER SUPPORT.
 5. PLACE A 1"X4" STRIP OF VELCORD BETWEEN EVAS AND THE OXYGEN COVER AT THE INBOARD EDGE TO DAMPEN ANY POTENTIAL VIBRATIONS. USE LOOP VELCORD ON THE COVER, AND HOOK VELCORD ON EVAS.

NOTE:
 CHECK THE CONSOLE INTERIOR BEFORE DRILLING TO ASSURE CLEARANCE FOR THE DRILL AND THE SCREW.

2

1

RIGHT SIDE INSTALLATION

1. EVAS 107STC-212 IS TO BE MOUNTED AT THE REAR OF THE RIGHT SIDE CONSOLE(BELOW THE "EXTRACT AIR FLOW" CONTRL).
 2. PLACE EVAS IN THE MOUNTING POSITION WITH THE BOTTOM OF THE EVAS MOUNTING PLATE IN THE FLOOR LEVEL TRACK FOR THE SIDE CONSOLE WALL, IF POSSIBLE. IF NOT POSSIBLE, LEAVE THE EVAS PLATE IN CONTACT WITH THE FLOOR.
 3. DRILL ONE 0.20 HOLE THROUGH THE CONSOLE WALL TO PICK UP THE EVAS TOP MOUNTING HOLE.
 4. DRILL A SECOND 0.20 HOLE THROUGH THE EVAS SIDE PLATE AND THE CONSOLE WALL FOR A LOWER MOUNTING SCREW. LOCATE THIS HOLE 3" ABOVE THE FLOOR AND CENTERED LEFT TO RIGHT.
 5. CEMENT ITEM 7 TO THE CONSOLE INTERIOR AT THE LOWER HOLE, USING EPOXY CEMENT WHICH MEETS FAA FLAMMABILITY REQUIREMENTS.
 6. INSTALL #10 NUTPLATE, MS21048-3 OR EQUIVALENT AIRCRAFT QUALITY NUTPLATE, TO UPPER HOLE.
 7. MOUNT EVAS USING (2) #10 SCREWS AND (2) #10 WASHERS.

B

B

A

A

ITEM NO	QTY	IDENTIFYING NO.	DESCRIPTION	MATERIAL SPECIFICATION	NOTE
7	1	1082	BACK PLATE	ALUMINUM	
6	2	9612	#10 NUTPLATE	SS	
5	2	9626	#10 FENDER WASHER	SS	
4	2	9541	#10X0.75 MACHINE SCREW	SS	
3			DELETED		
2	X	107STC-211	EVAS		
1	X	107STC-212	EVAS		

PARTS LIST

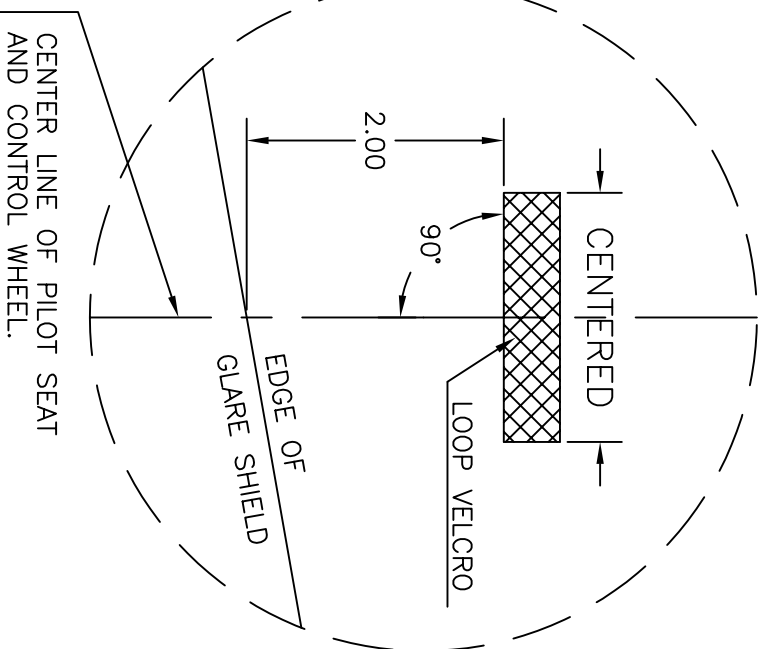
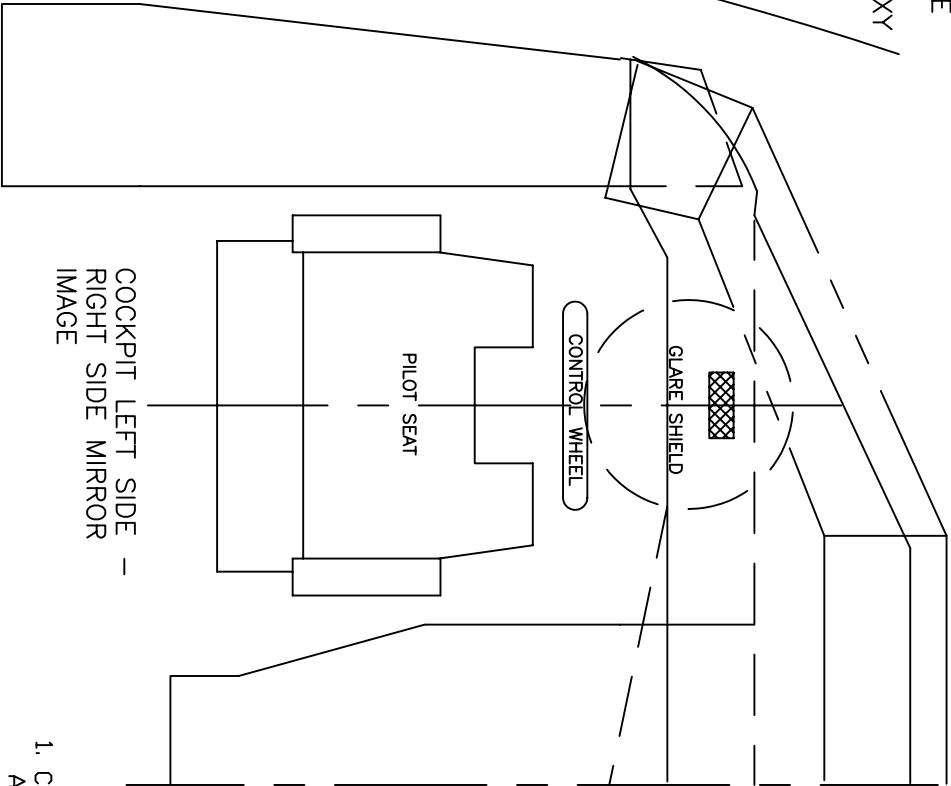
SIZE FSCM NO. **B** DRG NO. **6232** REV. **1**

SCALE LOCATION **62320031** SHEET **3** of **6**

2

1

1. CLEAN SURFACE
2. USE DEVCON TWO TON EPOXY



1. CLEAN THE GLARE SHIELD TOP SURFACE FROM THE AFT EDGE FORWARD 5", AND 3" TO EACH SIDE OF THE LONGITUDINAL CENTERLINE THROUGH THE CONTROL WHEEL.
2. CEMENT ONE 1"x5" LOOP VELCRO (CHOOSE THE COLOR PREFERRED) TO THE GLARE SHIELD. LOCATE THE VELCRO AS SHOWN. USE DEVCON TWO-TON EPOXY CEMENT OR SIMILAR.

VELCRO

THE INFORMATION CONTAINED HEREIN IS PROPRIETARY AND CONFIDENTIAL TO VISION SAFE CORP., AND SHALL NOT BE DISCLOSED OR COPIED, IN WHOLE OR IN PART WITHOUT THE WRITTEN CONSENT OF VISION SAFE CORP.

REV	1
SH	5

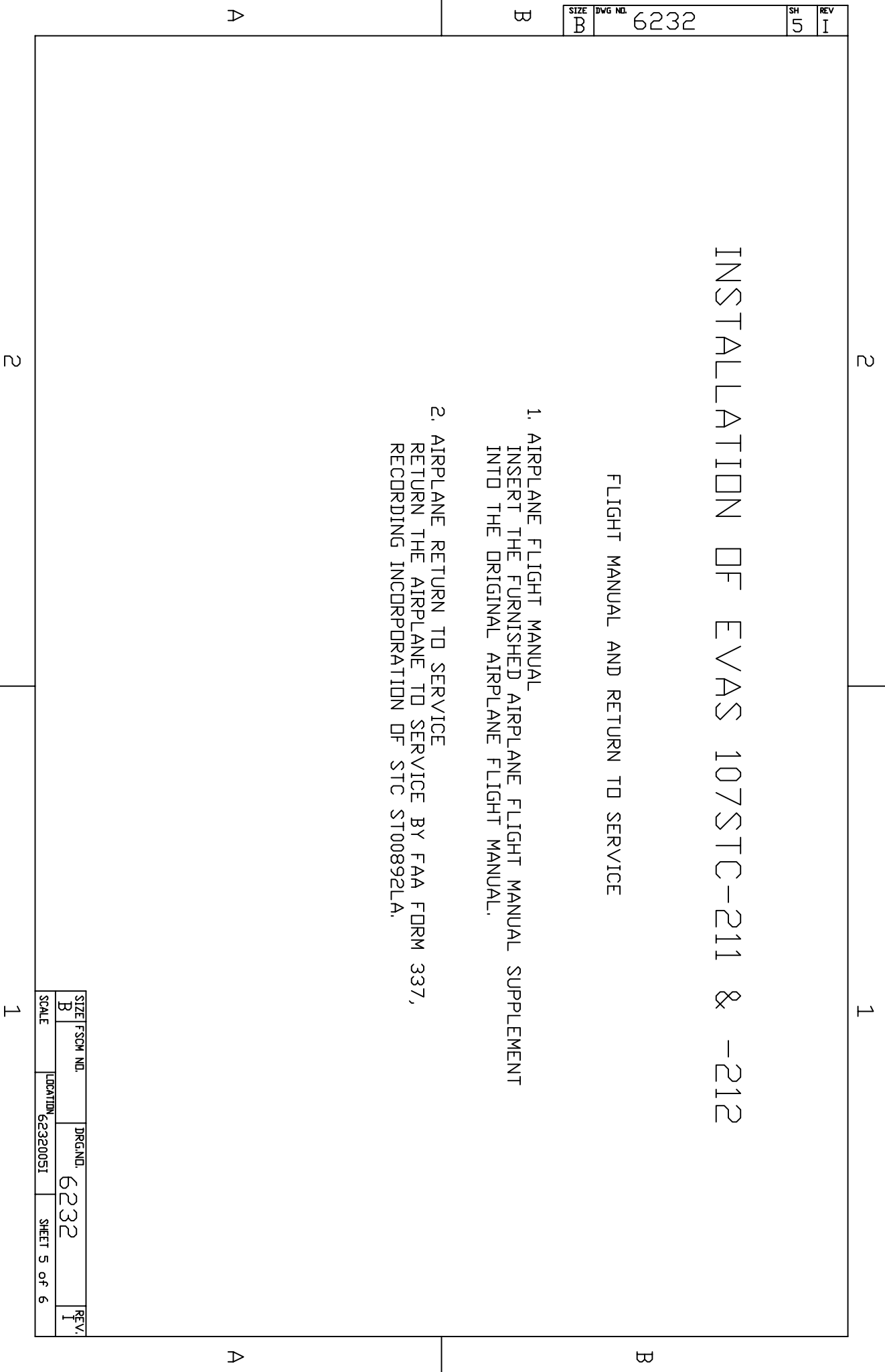
DWG NO.	6232
SIZE	B

INSTALLATION OF EVAS 107STC-211 & -212

FLIGHT MANUAL AND RETURN TO SERVICE

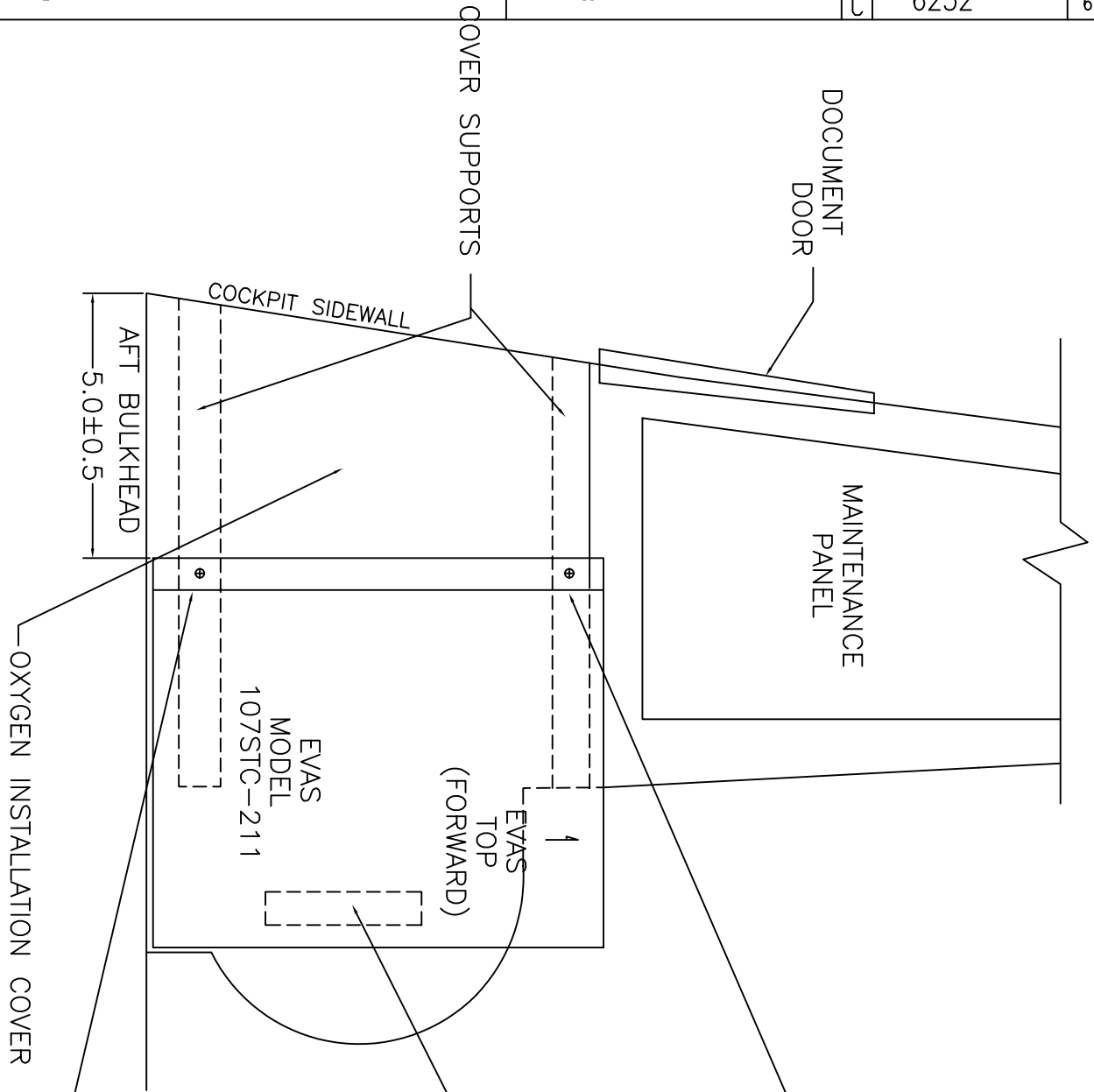
1. AIRPLANE FLIGHT MANUAL
 INSERT THE FURNISHED AIRPLANE FLIGHT MANUAL SUPPLEMENT
 INTO THE ORIGINAL AIRPLANE FLIGHT MANUAL.
2. AIRPLANE RETURN TO SERVICE
 RETURN THE AIRPLANE TO SERVICE BY FAA FORM 337,
 RECORDING INCORPORATION OF STC ST00892LA.

SIZE	FSCM NO.	DRG NO.	6232	REV.	1
B					
SCALE	LOCATION	62320051	SHEET 5 of 6		



2

1



DRILL FOR #10 SCREW

VELCRO INST.

107STC-211 EVAS INSTALLATION,
LEFT SIDE ONLY.

DRILL FOR #10 SCREW

OXYGEN INSTALLATION COVER

AFT BULKHEAD
5.0±0.5

EVAS
TOP
(FORWARD)

EVAS
MODEL
107STC-211

DOCUMENT
DOOR

MAINTENANCE
PANEL

COVER SUPPORTS

COCKPIT SIDEWALL

A

B

A

B

2

1

SIZE	FSCM NO.	DRG. NO.	6232	REV.
C				
SCALE	NONE	LOCATION	62320061	SHEET 6 of 6