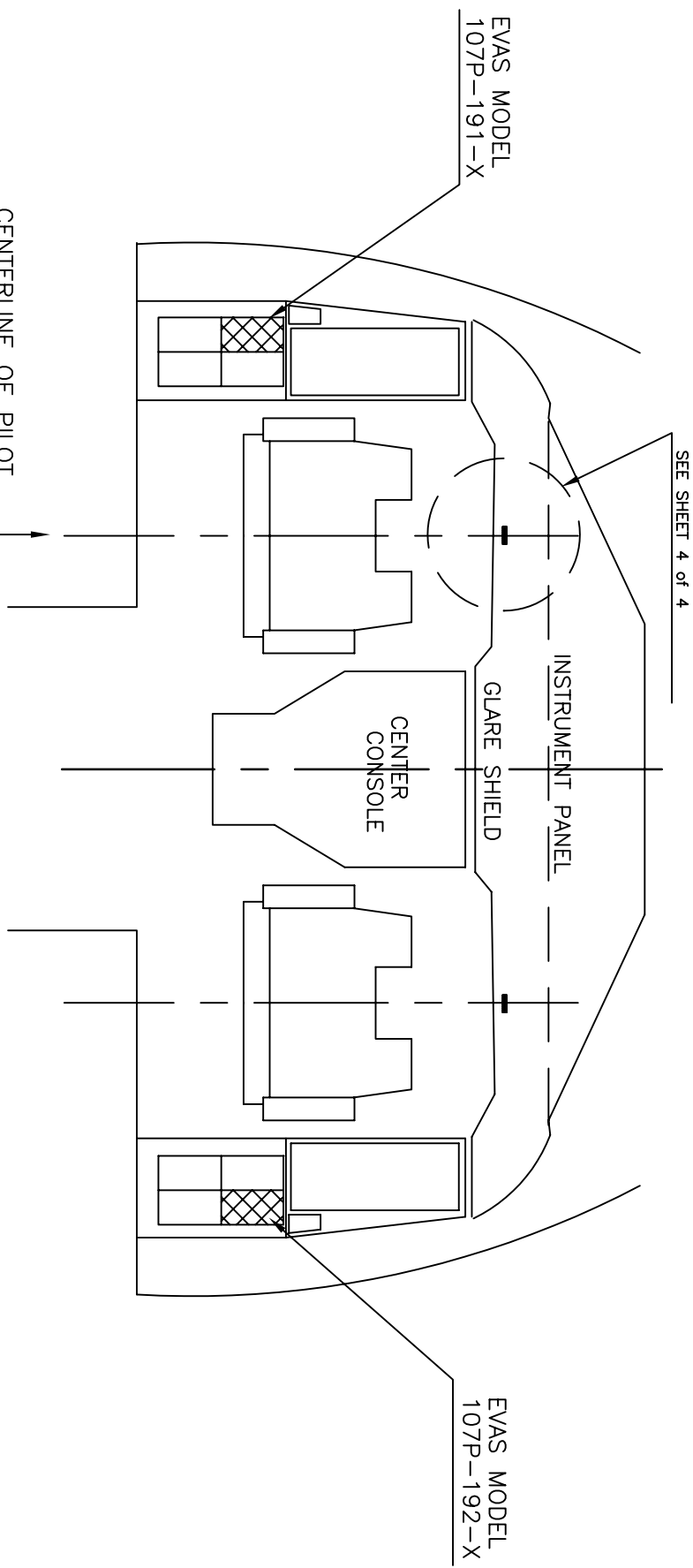


NOTES: UNLESS OTHERWISE SPECIFIED
 1. COCKPIT DESIGN IS GENERIC AND NOT AIRCRAFT SPECIFIC
 2. -X REFERS TO ALL 107P-191 & -192 SUB MODELS

REVISIONS			
REV	DESCRIPTION	DATE	APPROVAL
A	UPDATED VELCRO INSTRUCTION, SH. 3.	08/19/05	JLH



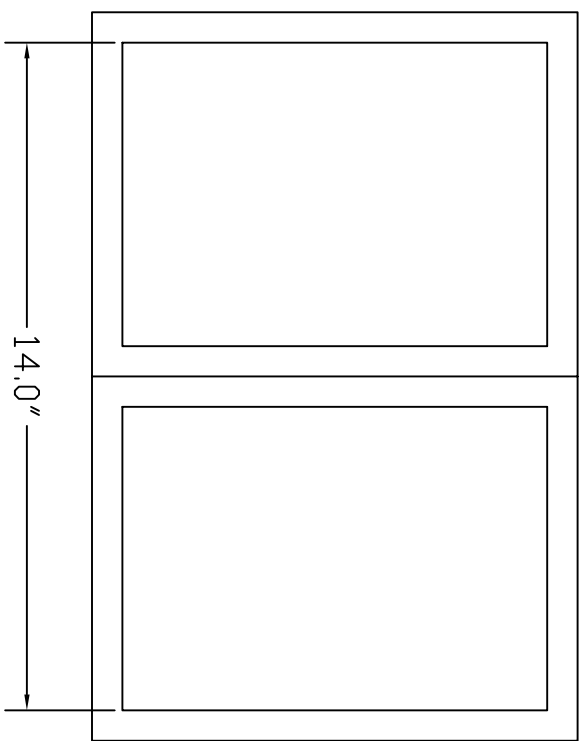
CENTERLINE OF PILOT SEAT, CONTROL WHEEL AND FLIGHT INSTRUMENTS

ITEM NO.	QTY	FSCM NO.	PART OR IDENTIFYING NO.	NOMENCLATURE OR DESCRIPTION	MATERIAL SPECIFICATION	NOTE
UNLESS OTHERWISE SPECIFIED DIMENSIONS ARE IN INCHES. TOLERANCES ARE FRACTIONS DECIMALS ANGLES						
PARTS LIST						
CONTRACT NO.			VISION SAFE CORPORATION P.O.Box 5011 Kaneohe, HI 96744-5011 (USA)			
APPROVALS			DATE			
DRAWN			01/20/05			
CHECKED						
ENG						
G.A.						
MATERIAL			EVAS MODEL 107P-191-X & -192-X			
FINISH			INSTALLATION: VARIOUS BOMBARDIER			
NEXT ASSY			SIZE FSCM NO. DIRG NO. 6033			
APPLICATION			SCALE NONE LOCATION 6033001A SHEET 1 of 4			

INSTALLATION OF EVAS 107P-191-X & 107P-192-X

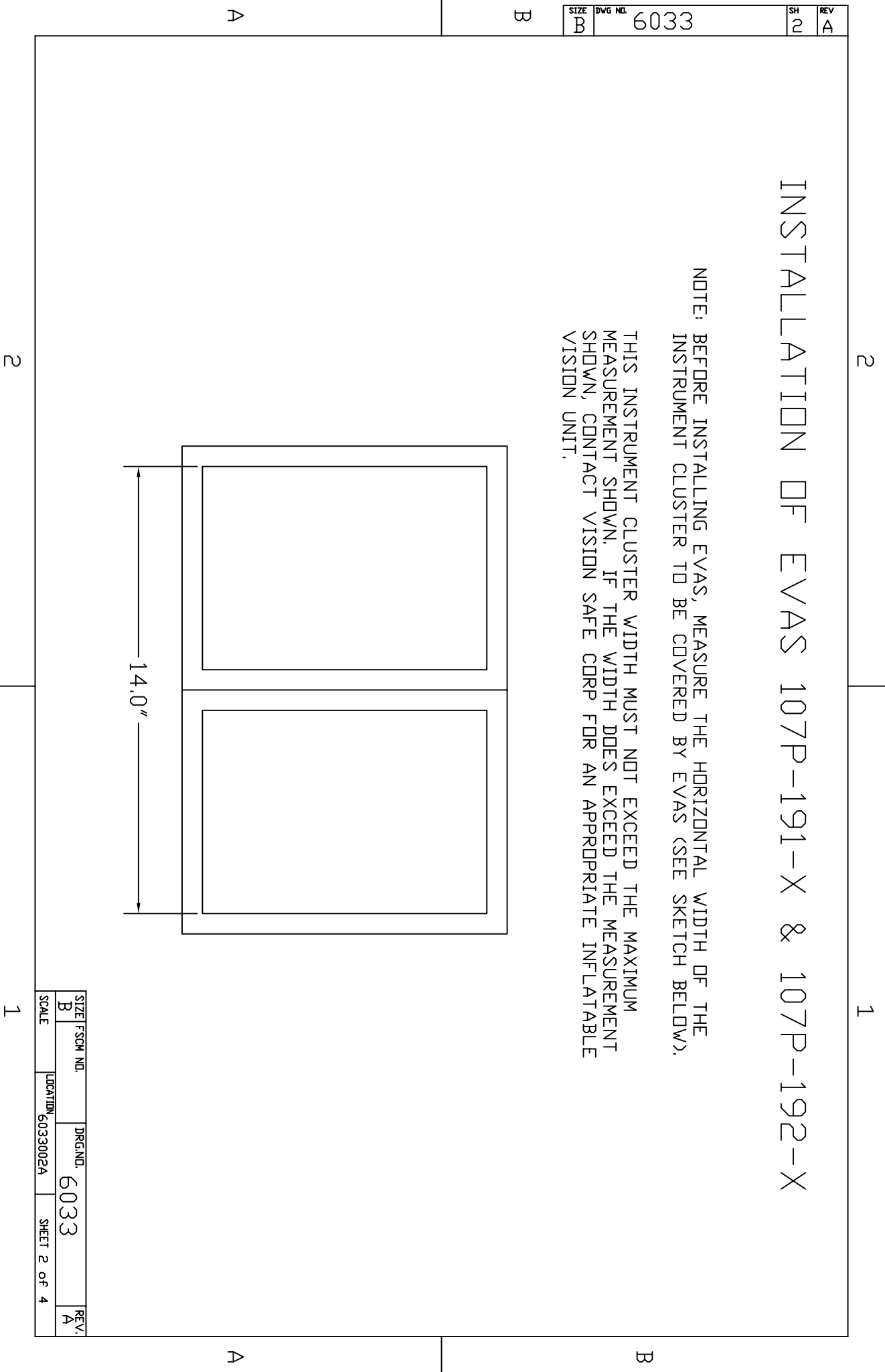
NOTE: BEFORE INSTALLING EVAS, MEASURE THE HORIZONTAL WIDTH OF THE INSTRUMENT CLUSTER TO BE COVERED BY EVAS (SEE SKETCH BELOW).

THIS INSTRUMENT CLUSTER WIDTH MUST NOT EXCEED THE MAXIMUM MEASUREMENT SHOWN. IF THE WIDTH DOES EXCEED THE MEASUREMENT SHOWN, CONTACT VISION SAFE CORP FOR AN APPROPRIATE INFLATABLE VISION UNIT.



SH	REV	SIZE	DWG NO.
2	A	B	6033

SIZE	FORM NO.	DRG NO.	REV.
B		6033	A
SCALE	LOCATION	SHEET 2 of 4	
	6033002A		

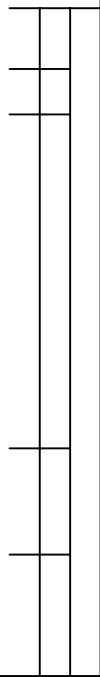


B

A

2

1



INSTALLATION OF EVAS 107P-191-X & -192-X

EVAS UNIT

1. EVAS MODELS 107P-191-X & -192-X ARE DESIGNED TO FIT THE PILOT FLIGHT DATA CASE WITHOUT ALTERATION, AS THE EVAS IS SELF-CONTAINED, NO ADDITIONAL INSTALLATION IS NEEDED.

2. THE INDICATED LOCATION IS A SUGGESTION, AS EVAS IS LOOSE EQUIPMENT, IT MAY BE STORED IN ANOTHER CONVENIENT LOCATION ACCESSIBLE TO THE PILOT. HOWEVER, PRIOR TO DEPLOYING EVAS, THE UNIT MUST BE ON THE OUTBOARD SIDE OF THE PILOT AND WITHIN ARMS REACH OF THE GLARE SHIELD.

VELCRO - WITHOUT MOVABLE SUN VISOR

1. CLEAN THE GLARE SHIELD TOP SURFACE FROM THE AFT EDGE FORWARD 5", AND 3" TO EACH SIDE OF THE LONGITUDINAL CENTERLINE THROUGH THE CONTROL WHEEL.
2. CEMENT 1"x5" LDDP VELCRO TO THE GLARE SHIELD. LOCATE THE VELCRO AS SHOWN ON SHEET 4 OF 4. USE DEVCON TWO-TON EPOXY CEMENT.

VELCRO - WITH MOVABLE SUN VISOR

1. FOR GLARE SHIELDS INCORPORATING MOVABLE SUN VISORS, INSTALL VELCRO STRIP AS ABOVE. THEN CUT THE VELCRO AT THE GAP COMMON TO THE GLARE SHIELD.

DOCUMENTATION

1. IN THE OPERATING MANUAL, FLIGHT MANUAL, OR CHECK LIST, AS APPROPRIATE, ADD 'DEPLOY EVAS' TO EACH SMOKE EMERGENCY PROCEDURE. USE PERMANENT METHODS COMMENSURATE WITH THE ORIGINAL DOCUMENT, SUCH AS TYPEWRITTEN, PLASTIC-COATED LABEL, ETC.

SIZE	FSCM NO.	DRG NO.	6033	REV.	A
B					
SCALE	LOCATION	6033003A	SHEET 3 of 4		

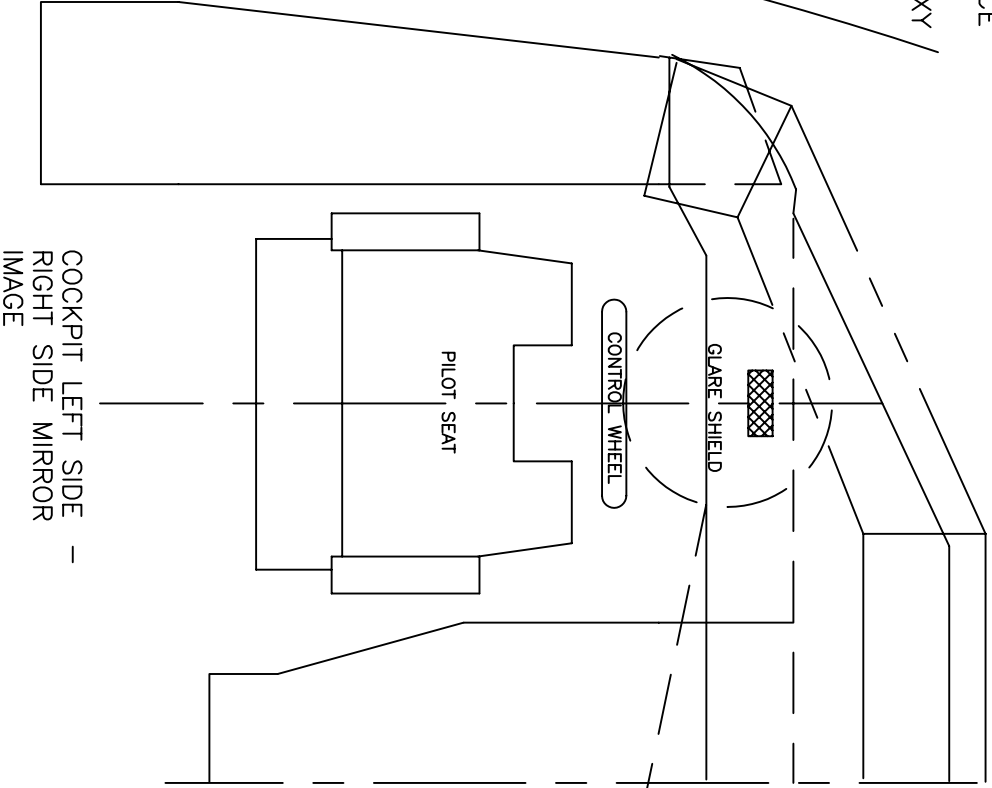
2

1

A

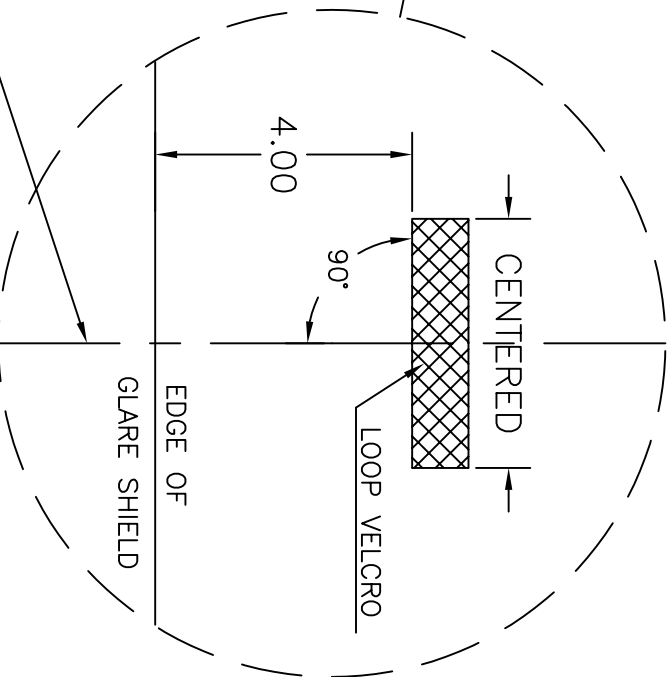
B

- NOTE:
1. CLEAN SURFACE
 2. USE DEVCON TWO TON EPOXY



THE INFORMATION CONTAINED HEREIN IS PROPRIETARY AND CONFIDENTIAL TO VISION SAFE CORP., AND SHALL NOT BE DISCLOSED OR COPIED, IN WHOLE OR IN PART WITHOUT THE WRITTEN CONSENT OF VISION SAFE CORP.

IVU VELCRO INSTALLATION



NOTE: CENTERLINE OF PILOT SEAT, CONTROL WHEEL AND PRIMARY FLIGHT INSTRUMENTS. NOTE: GLARE SHIELD EDGE ANGLE IS NOT AIRCRAFT SPECIFIC. VELCRO CENTER SHOULD BE AS INDICATED.